

A nighttime photograph of a festival stage. In the center, a DJ booth is visible with several people behind the counter. A large crowd of people is gathered in front of the stage. To the left, a tall lighting tower with several spotlights is illuminated with blue light. The background features trees and other festival structures, all under a dark night sky.

HY  
TOWER

# HYTOWER & PERIPHERALS

STAGE  
LINE<sup>®</sup>

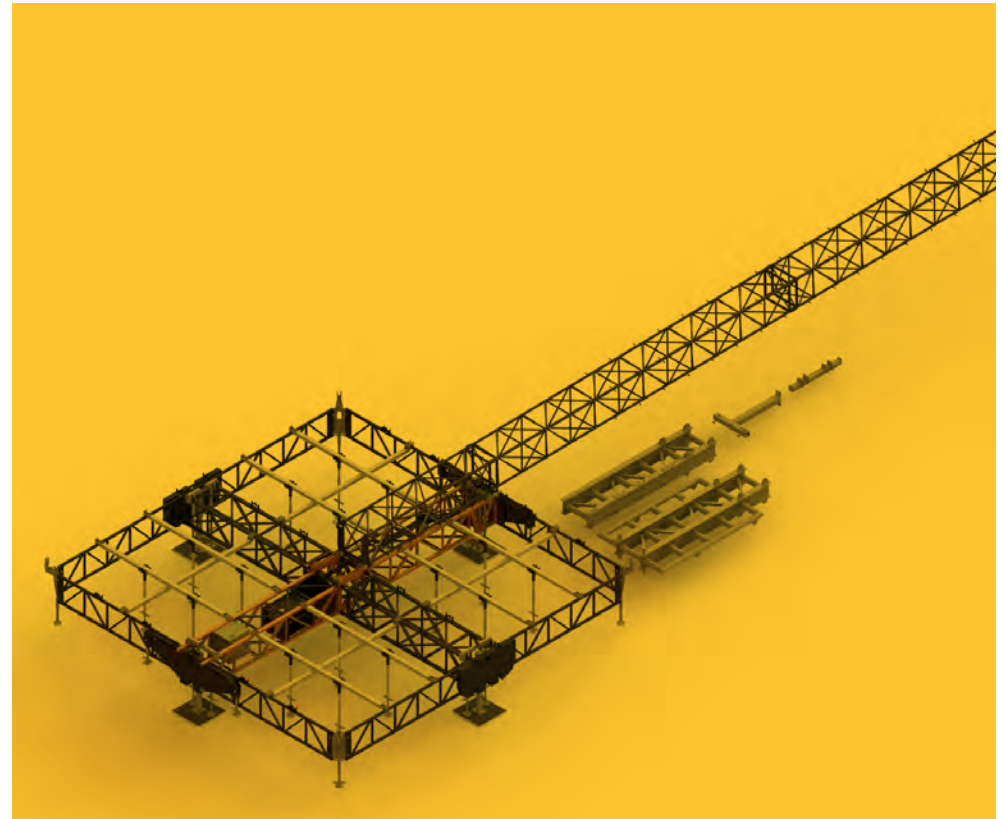


# HYDRAULICALLY RAISED

---

**HYTOWER: A SELF SUPPORTING SYSTEM  
THAT IS COMPACT AND SIMPLE TO SET UP.**





## SPEED, INNOVATION & SAFETY

To address all your staging needs, Stageline introduces its Mobile Followspot & Delay Tower: the HYTOWER.

Hydraulically deployed, no crane, anchoring or ballasts are required.

### FLOOR

24' X 24' (7.3 m X 7.3 m)

### WIND RESISTANCE


up to 115 mph (185 km/h)

### RIGGING

15,290 lb (6,935 kg)

### TRANSPORT

Two (2) Towers fit on 1 trailer

SET UP	QTY	HRS
Set up for one HyTower	4x 	4

# RAISED IN 5 MINUTES

---

**ALL WORK DONE AT GROUND LEVEL: A SAFE, FAST AND SIMPLIFIED SET-UP.  
NO CRANE NEEDED. SELF BALLASTED STRUCTURE.**

**THE OPERATION IS WELL CONTROLLED AT CONSTANT SPEED**

- 1** Center block is unloaded from the truck.
- 2** Installation and deployment of trussing structure into an "X" base frame.
- 3** Installation of steel plates attached on the four sides of the truss sections (forklift required).
- 4** Assembling tower sections into a 24' x 24' (7.3 m x 7.3 m) rigid box structure.
- 5** Installation of the head blocks and chain motors from the ground.
- 6** Tower is pushed by a fully retractable hydraulic cylinder.









**IMPROVED SIGHTLINES  
WITH UNOBTUSIVE  
STRUCTURE**

---







# SAFETY & RELIABILITY UNDER ALL SKIES IN ALL CONDITIONS

---

## READY FOR HEAVY WINDS

Free unobstructed space from cables to set up or tear down projectors and speakers even in case of high winds.

## SUPERIOR WIND RESISTANCE

115 mph (185 km/h) without pods.  
77 mph (123 km/h) with pods.



# PODS QUICK RELEASE SYSTEM

---

No technician required to climb  
to releasethе baskets from the tower.



# A TOWER WITH MULTIPLE APPLICATIONS

---

## 1 SCREEN SUPPORT

Designed with multiple and flexible rigging points, the tower can be easily transformed into a screen support. Multiple HYTOWERS can be connected for wider stage sets.

## 2 VIP & ADA PLATFORM

Base of the tower can be transformed into a 24' x 24' (7.3 m x 7.3 m) VIP or ADA area using stairs and/or ADA compliant access ramp.

## 3 RAISE UP TO FOUR (4) FOLLOWSPOT BASKETS

Easy to install. 8' x 8' (2.4 m x 2.4 m) pods are inserted in each other and raised by four (4) motors to keep the symmetry in ascending and descending motion.

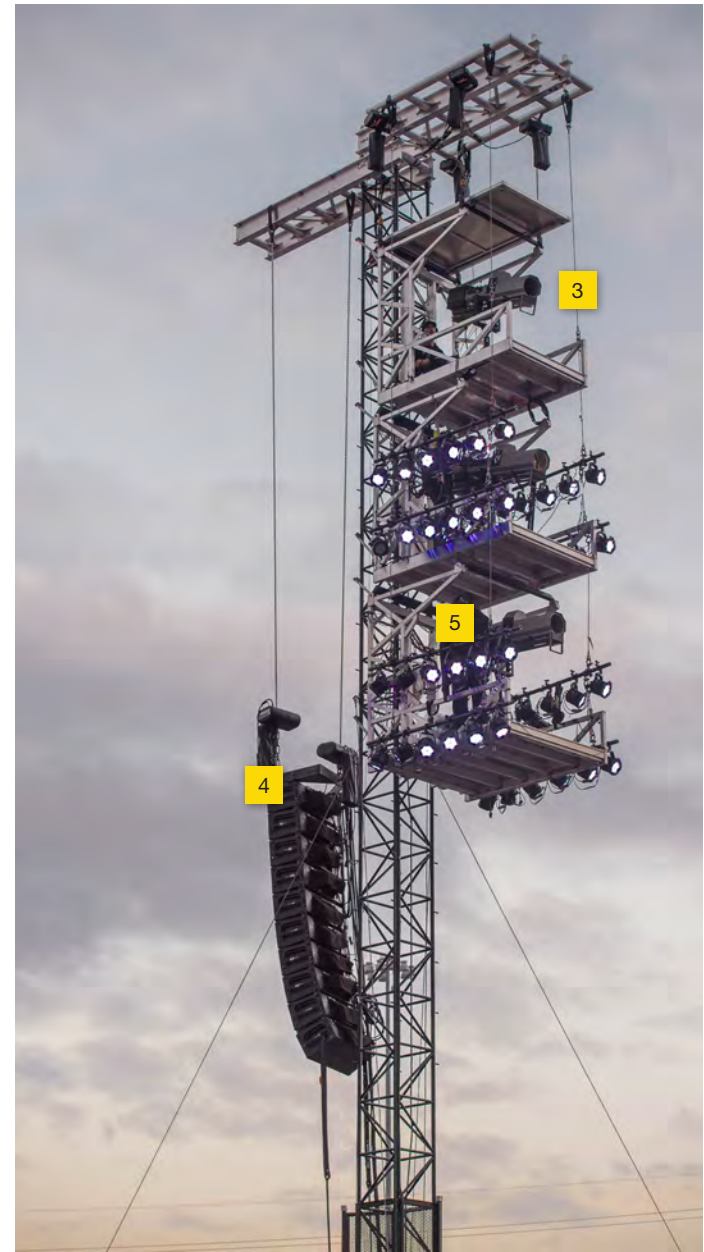
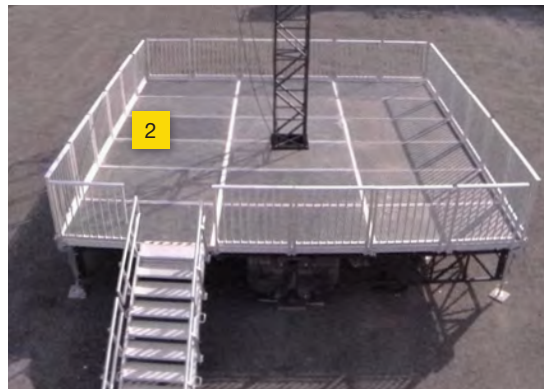
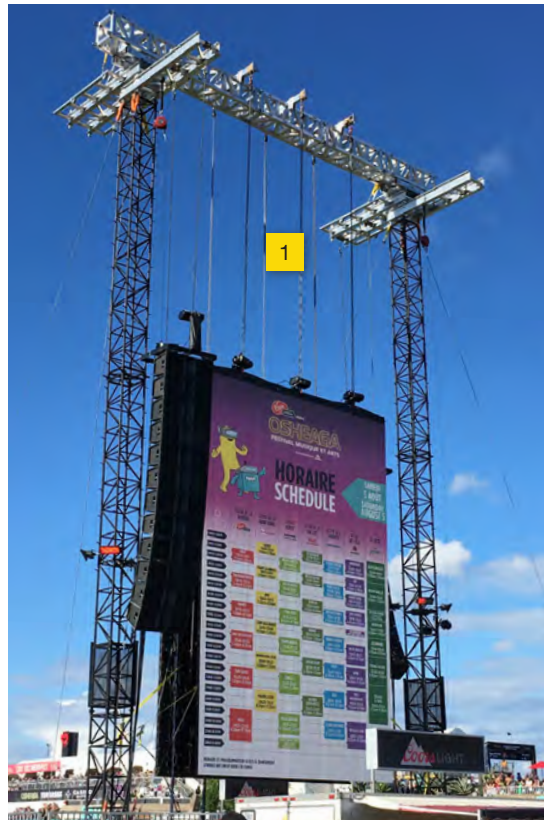
## 4 DELAY TOWER

4,400 lb (1,995 kg) rigging point.

## 5 AMBIANCE LIGHTING











Screen Support / Front view



Screen Support / Rear view





Screen Support



Christmas Tree Structure



Followspot tower / NHL Winter Classic



An aerial photograph of a large outdoor concert venue. A stage is positioned in the center, with a massive crowd of people surrounding it. A yellow square with the number '1' is placed on the left side of the stage. The background shows trees and a body of water.

# FRONT OF HOUSE: (T1) 2 SIZES AVAILABLE (T2)

---

FOH are built to meet Stagelines safety requirements and provide a 77 mph (123 km/h) wind resistance.





**Fast and reliable.** A two-tiered floor with a 360 degree coverage to protect from the elements. Curtain style front panels, along with sectional panels that can be opened or closed.

**1 FOH3224** 32' x 24' (9.7m x 7.3m)

Available with the SAM750 staging system.

**2 FOH2424** 24' x 24' (7.3m x 7.3m)

Available with the SAM575 staging system.

**3 CAMERA CONDO**

12'-4" x 4'-5" (3,75 m x 1,4 m)  
Covered on 8' (2,4 m)

# WHY THE INDUSTRY PREFERS STAGELINE

---

## **Most Widely used**

More than 25,000 events per year in over 50 countries - an average of 68 events per day.

## **Craftsmanship and expertise**

Every stage is built in-house and benefits from serious engineering and craftsmanship with experience gathered from decades of use in outdoor events.

## **Quality control and delivery**

Each mobile stage goes through a complete inspection during manufacturing including load tests and complete installation prior to delivery.

## **Exceptional durability and reliability**

Built to last 25 years and more with proper care and maintenance.

## **Provider of safe staging environments for over 30 years**

Highest wind resistance - up to 115 mph (185 km/h) without windwalls and 77 mph (123 km/h) with windwalls. No incident causing an injury due to a breakdown of equipment.

## **Outstanding value**

Low operation and maintenance cost. High resale value even after 10 years.

## **Certification**

Each stage complies with road regulations. Stageline provides complete engineering certification for both structural design and rigging capacity for all countries. Certified documents available for each state and province of the US and Canada.

## **Environmentally responsible**

All products are manufactured in Stageline's state of the art LEED® certified facility integrating the latest environmental technologies.

## **Award-winning**

Our company and products have achieved high acclaim in the industry and have won several engineering and event industry awards.







## WHAT OUR CLIENTS SAY

“We saved so much time with the HYTOWERS! We find the same great engineering that Stageline is renowned for: efficient, compact and safe! We also love how we have been able to integrate a VIP at the base of each tower.”

**Scott Pollard**  
**Technical Director & Production Manager /**  
**RBC Bluesfest**

“With this new addition in the Stageline product range, we can now get stages, FOH, Follow and Delay Towers as a one stop shop. We used the HYTOWERS as screen supports and as Followspot & Delay Towers at our events and the installation has always been a stress free process. Sleek and versatile, they definitely enhance the experience for fans on our site.”

**Patrick Fortaich**  
**Operations**  
**& Production Manager / Midway Group**

# TECHNICAL SPECIFICATIONS

## CAPACITY OF POINTS

**Maximum load bearing capacity**  
15,290 lb (6,935 kg)

**P1**  
4,400 lb (1,995 kg)

**P2**  
4,400 lb (1,995 kg) per pair

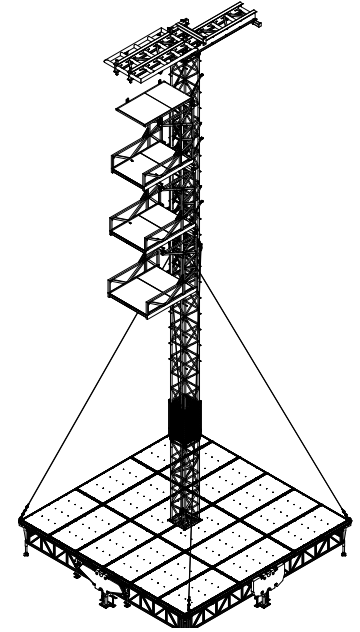
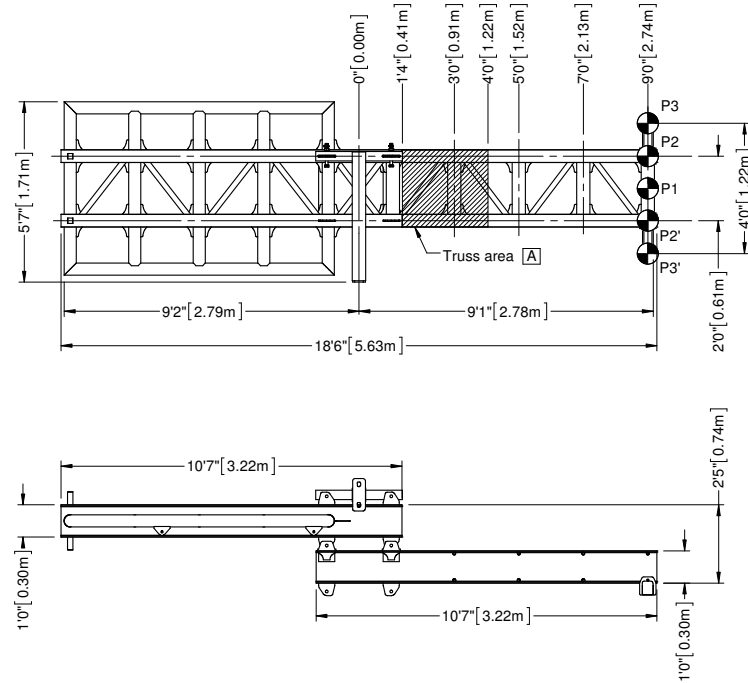
**P3**  
4,400 lb (1,995 kg) per pair

**Truss area A**  
10,000 lb (4,536 kg)

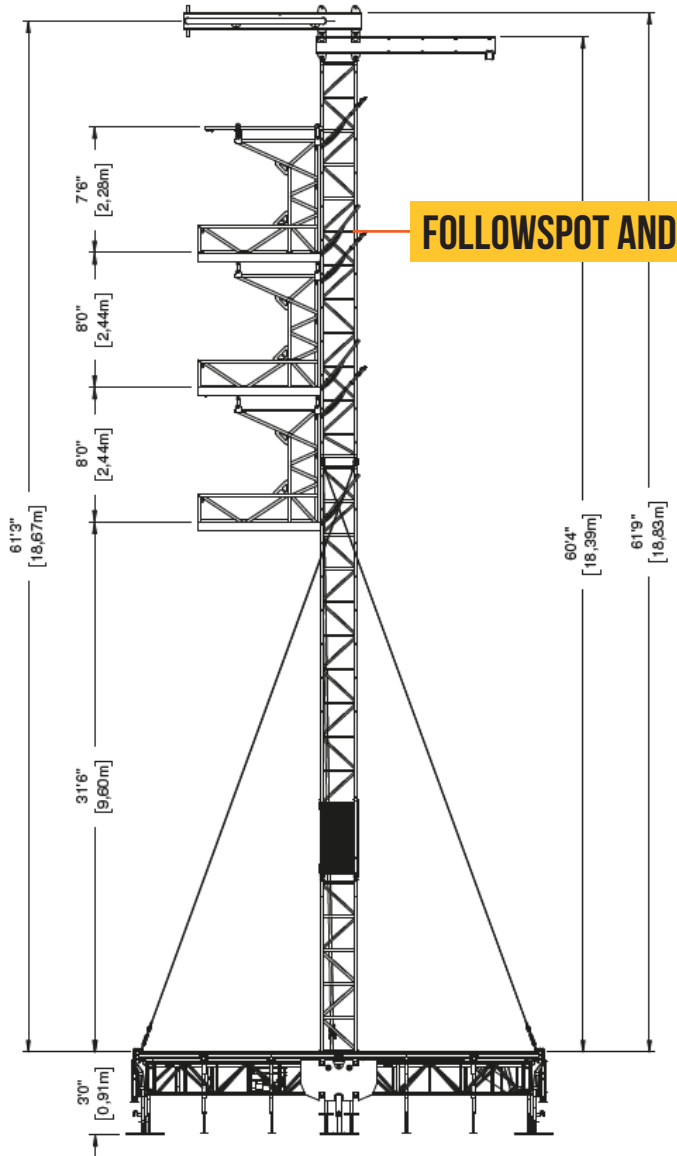
## FOLLOWSPOT PLATFORM CAPACITY

- 5,290 lb (2,400 kg) total
- 1,322 lb (600 kg) per platform

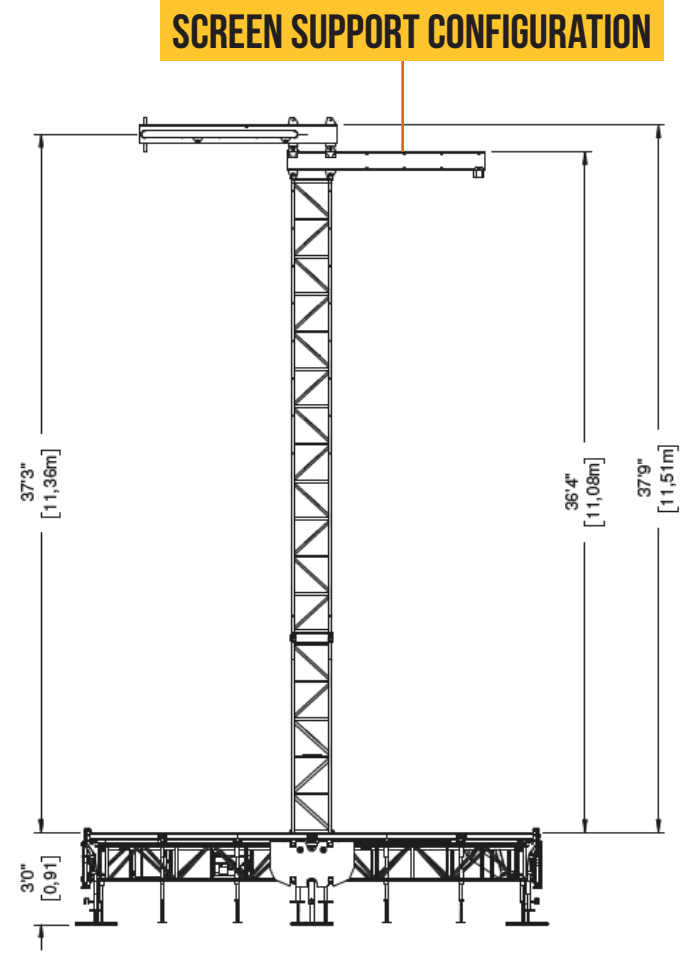
Followspot platform capacity includes all equipment and workers.







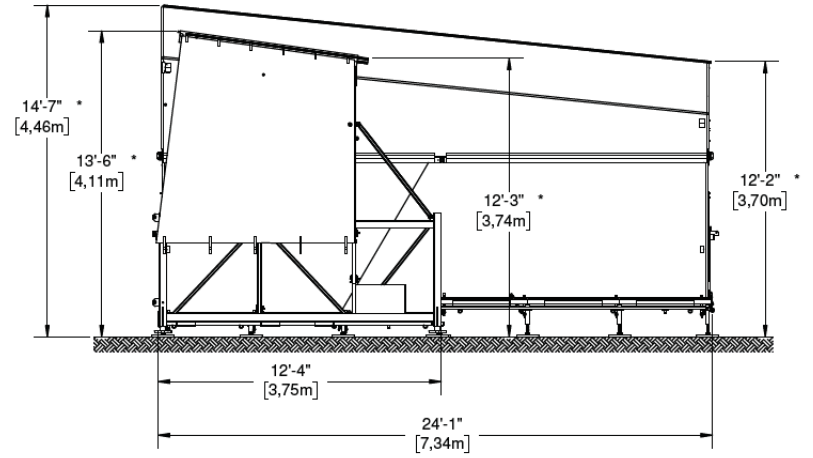
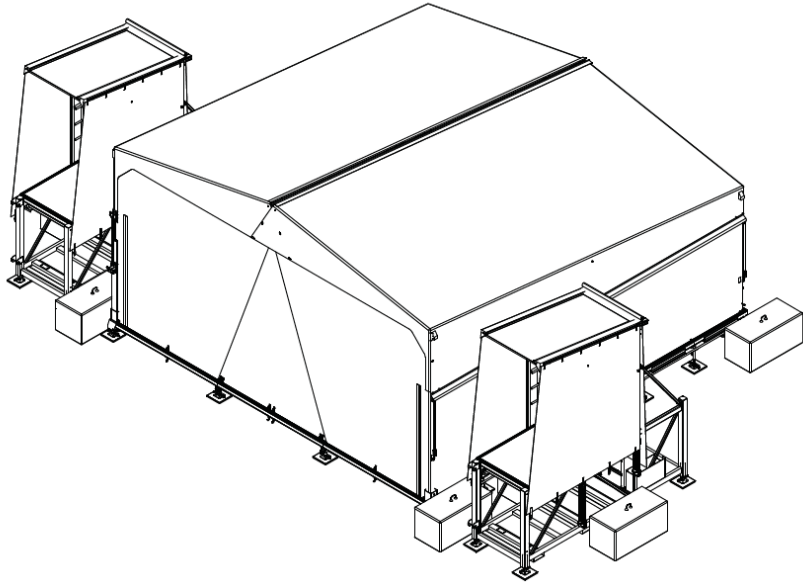
**FOLLOWSPOT AND DELAY TOWER**



**SCREEN SUPPORT CONFIGURATION**

# FOH2424

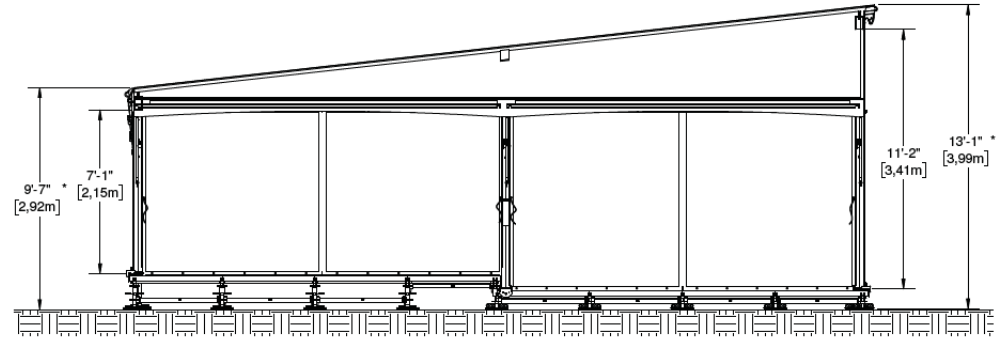
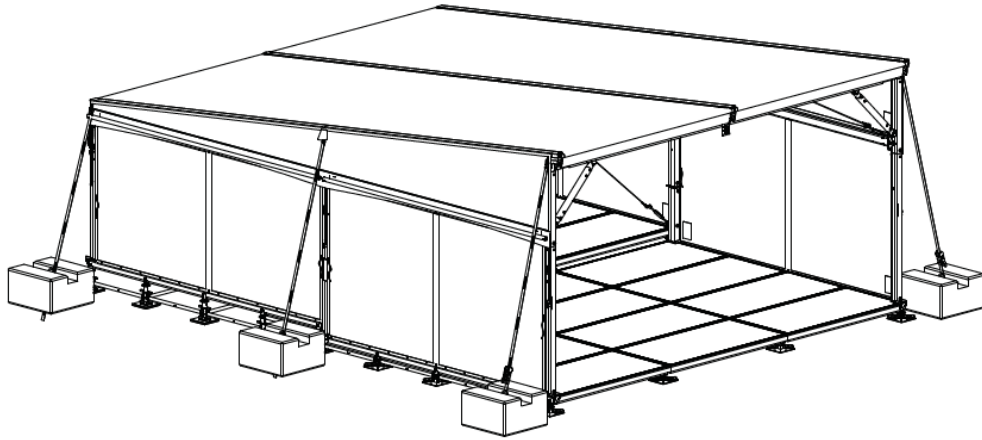
---





# FOH3224

---



\* Dimensions based on StageLine standard height

827 L'Ange-Gardien Blvd., L'Assomption  
Quebec, Canada J5W 1T3  
**1 450.589.1063 / North America 1 800.267.8243**  
[stageline.com](http://stageline.com)

INNOVATIVE MOBILE STAGING

