

HYRIG

Bell  FESTIVAL D'ÉTÉ DE QUÉBEC

# HYRIG LED SCREEN SUPPORT

© Festival d'été de Québec / Étienne Dionne

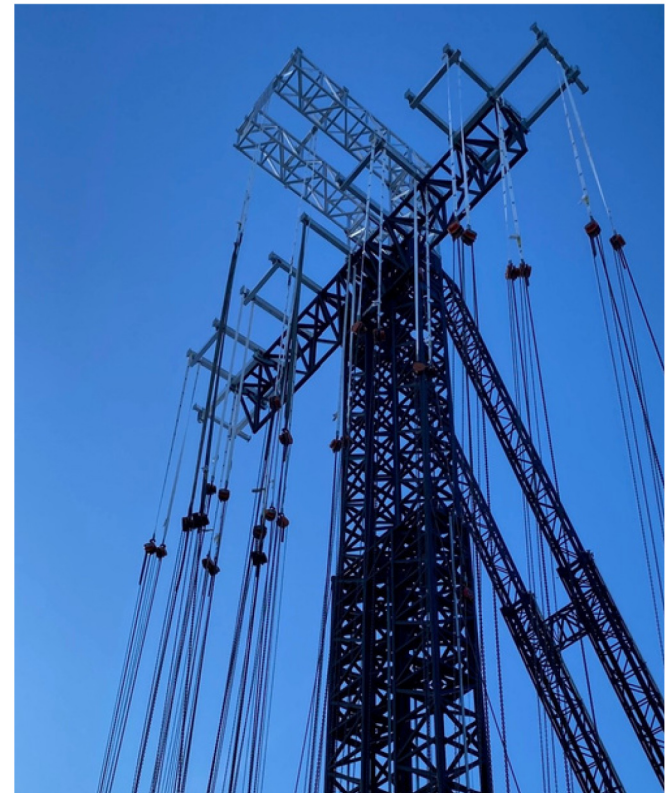
STAGE  
LINE

# HyRig

---

A STAGING EQUIPMENT PURPOSELY BUILT  
FOR LARGE LED SCREEN INSTALLATION.





## SCREENS & WIND, NO PROBLEM

Streamline your events with unmatched wind resistance, simplified high wind protocols and fast setups.

**WIND RESISTANCE**  
Up to 77mph (125km/h)


### RIGGING

30,000 lbs (13,600 kg) per unit, including :

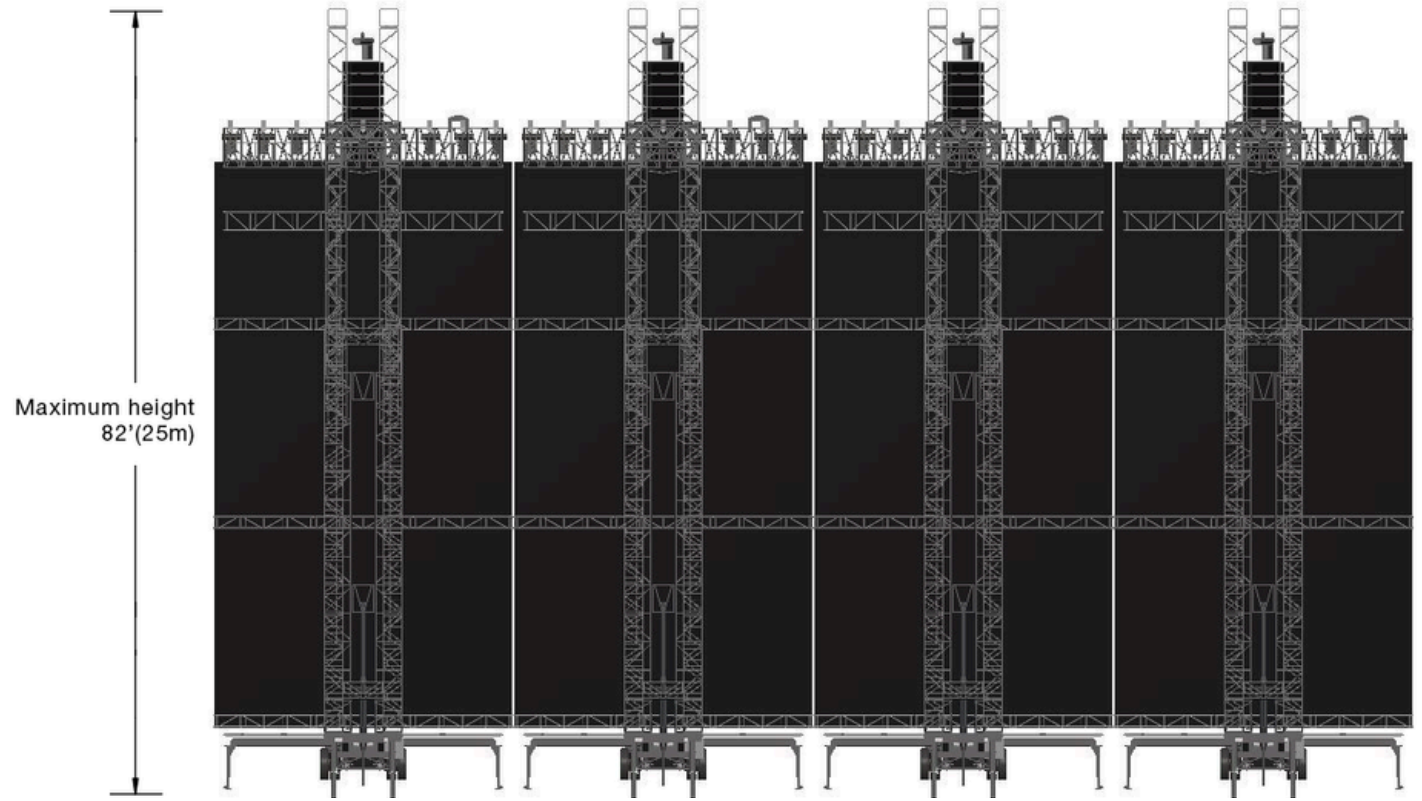
- 6,600 lbs (2,993 kg) for PA
- 3,300 lbs (1,496 kg) per sidefills

### SCREENS

Up to 30' x 57' (9m x 17m)

SET UP	QTY	HRS
Set up for one HyRig	4x 	4

Elevate your stage design with flexible integration options, incorporating screens, sound, and other set elements.



Rear view of a 120' x 57' (36m x 17m) LED wall using four towers.

## A POWERFUL STANDALONE STAGING SOLUTION

---

The HyRig is a self-supported structure, hydraulically deployed. Compatible with SAM Series stages or combined with other HyRig units, this LED screen support equipment offers multiple configurations, including a wide 120' x 57' (36m x 17m) LED wall.



