

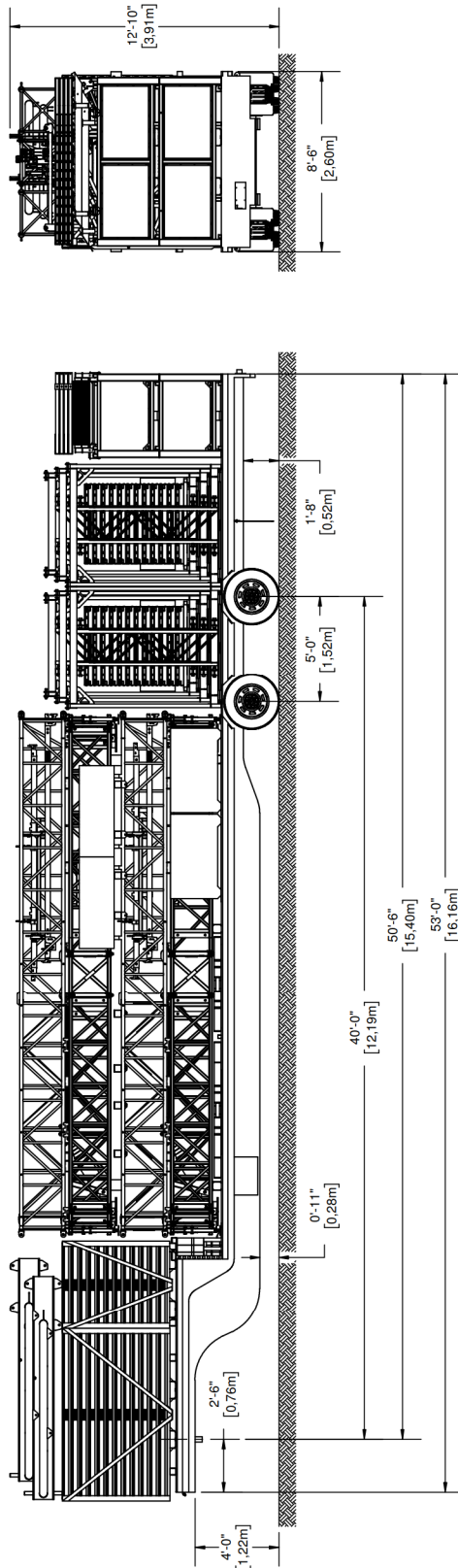
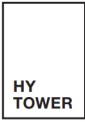
HY
TOWER

HYTOWER TECHNICAL DRAWINGS

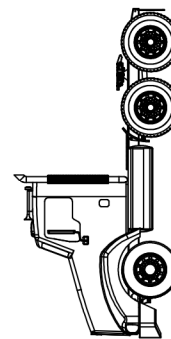
RENTAL

STAGE
LINE[®]

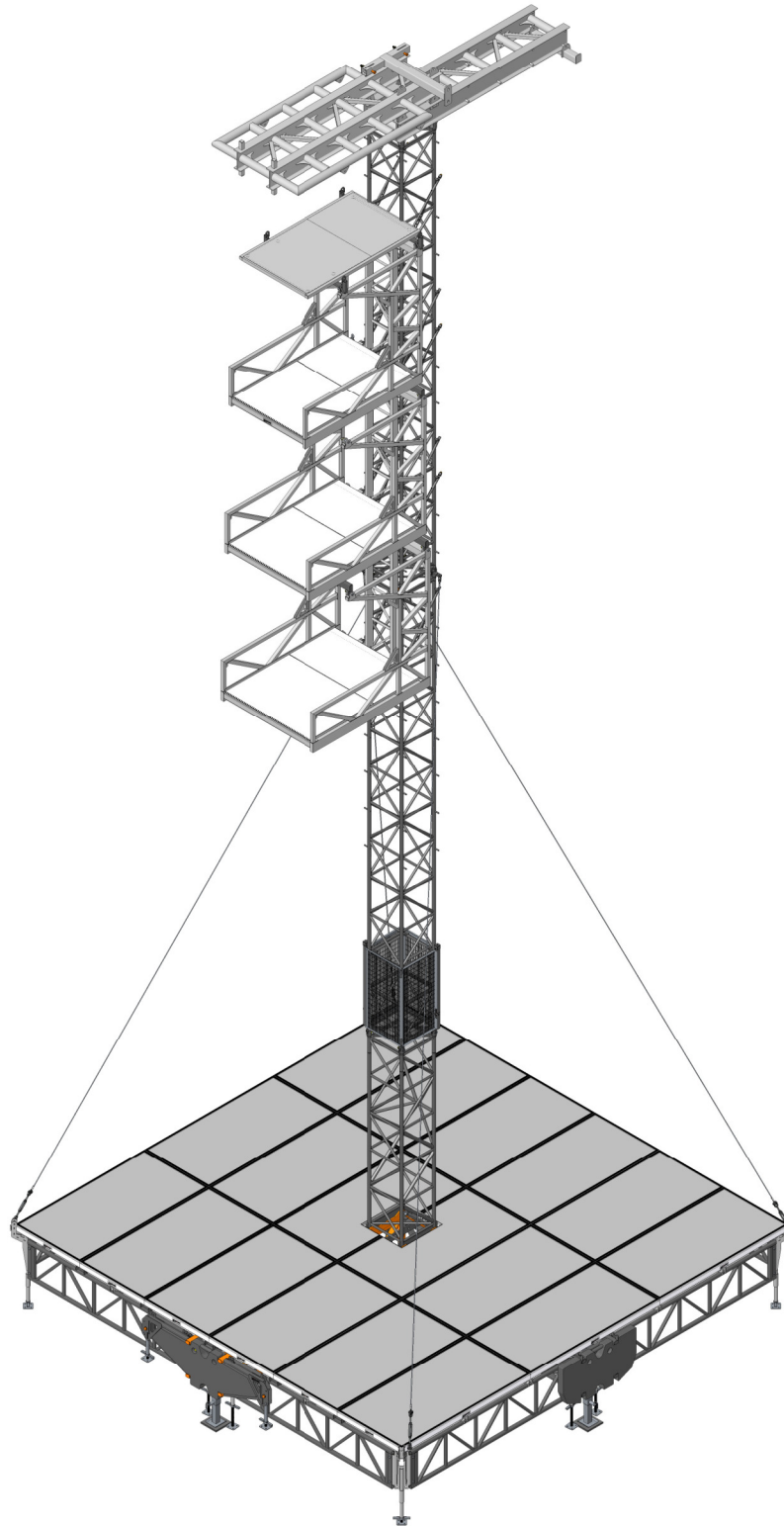
MASS & DIMENSIONS



MASS HYTOWER & TRAILER	UNLADEN		STANDARD EQUIPMENT		MAXIMUM CAPACITY	
	LB	KG	LB	KG	LB	KG
Total Mass	8,450	3,833	56,750	25,741	58,000	26,308
Mass on Axle			33,920	15,386	34,000	15,422
Mass on Hitch			22,830	10,356	24,000	10,886

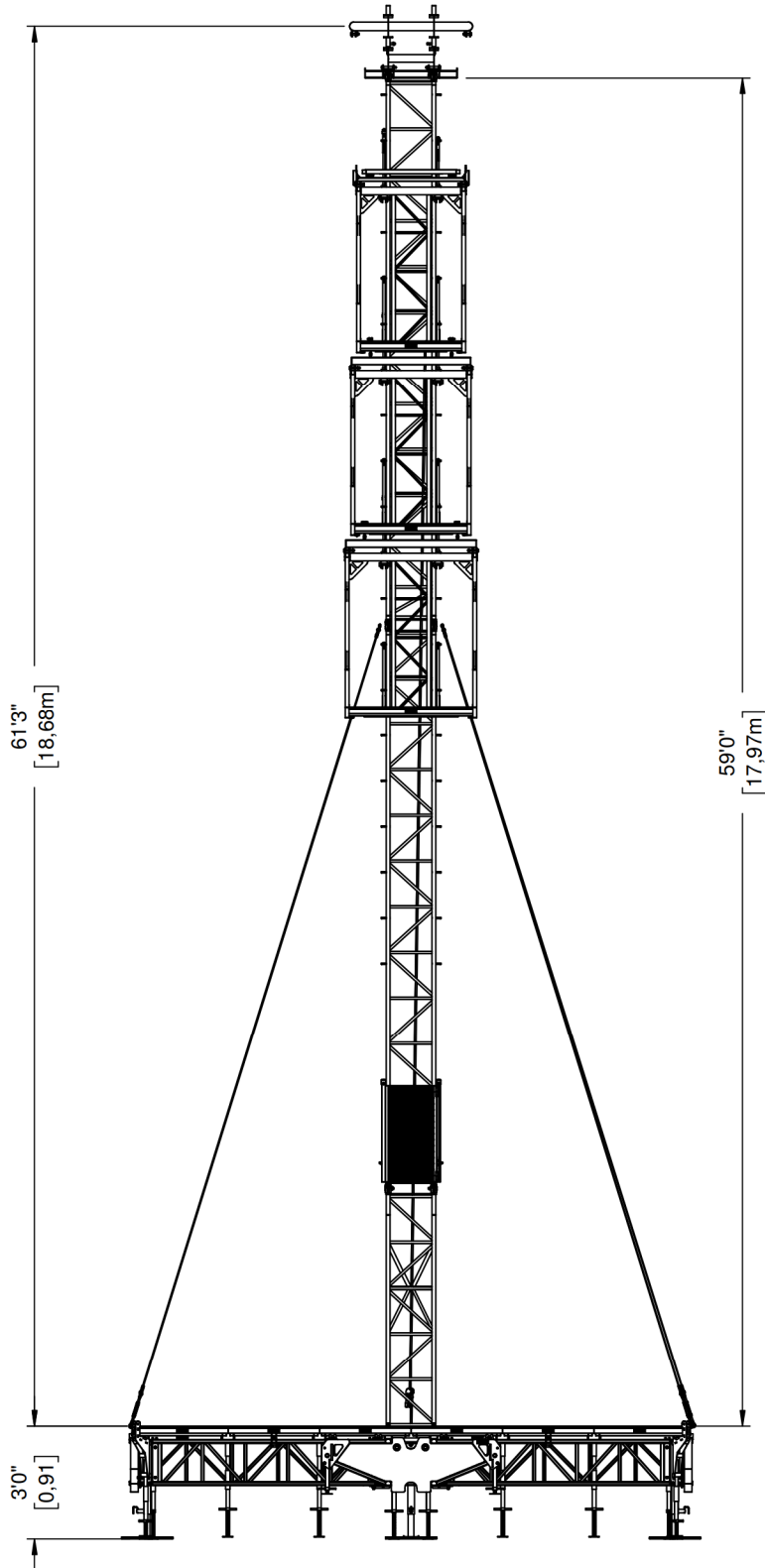


Drawings may show the HYTower equipped with optional accessories. May be sold separately.
 © 2023 - All rights reserved, Stageline Mobile Stage Inc. Any and all forms of adaptation or reproduction of this document including the plans and drawings, in whole or in part, are strictly forbidden without the written authorization of Stageline Mobile Stage Inc. Mass may vary depending on options. Technical specifications may change without notice. Stage specifications are subject to change without notice. Figures are nominal.



FRONT VIEW

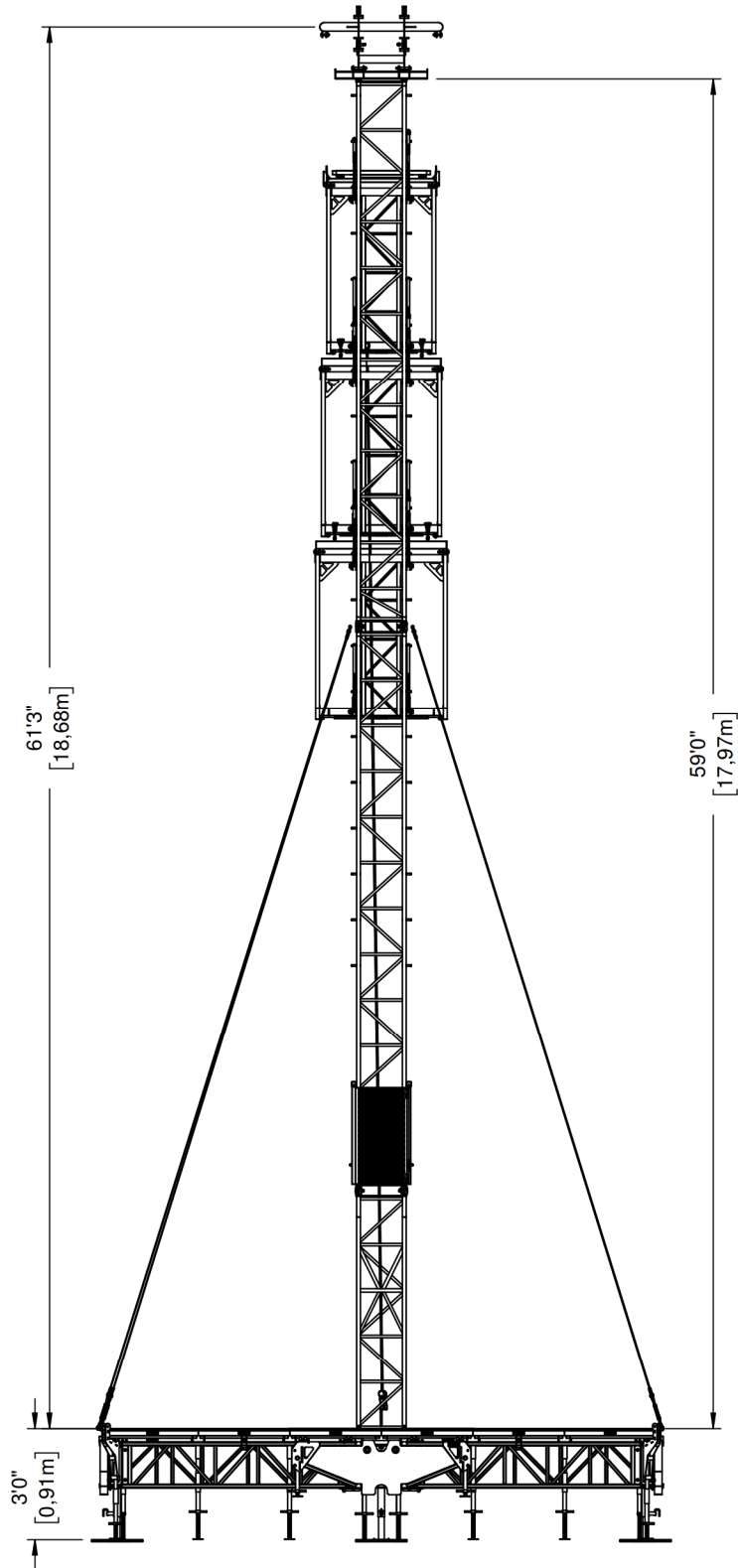
HY
TOWER



Drawings may show the HYTower equipped with optional accessories. May be sold separately.
© 2023 - All rights reserved, Stageline Mobile Stage Inc. Any and all forms of adaptation or reproduction of this document including the plans and drawings, in whole or in part, are strictly forbidden without the written authorization of Stageline Mobile Stage Inc. Mass may vary depending on options. Technical specifications may change without notice. Stage specifications are subject to change without notice. Figures are nominal.

REAR VIEW

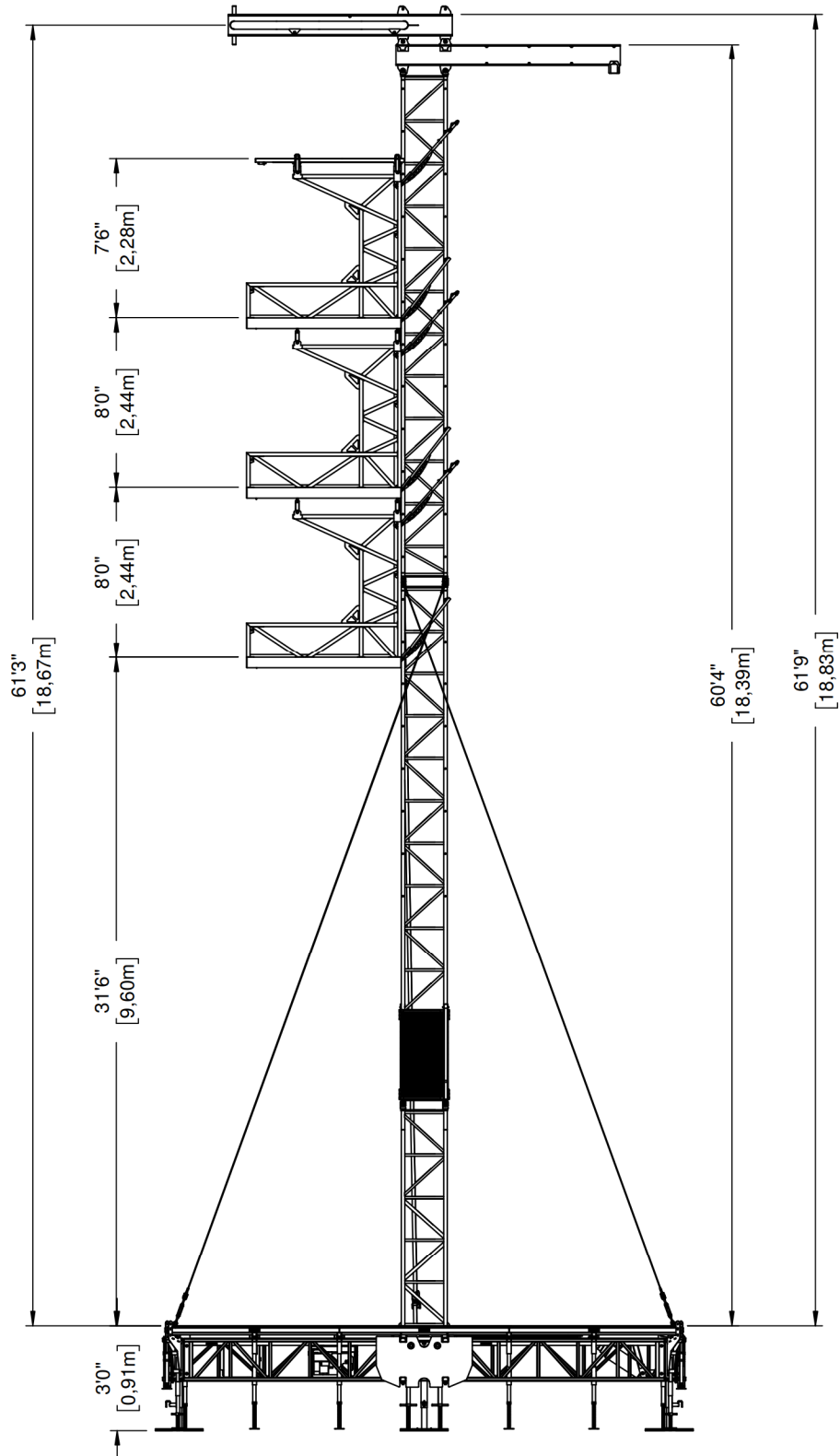
HY
TOWER



Drawings may show the HYTower equipped with optional accessories. May be sold separately.
© 2023 - All rights reserved, Stageline Mobile Stage Inc. Any and all forms of adaptation or reproduction of this document including the plans and drawings, in whole or in part, are strictly forbidden without the written authorisation of Stageline Mobile Stage Inc. Mass may vary depending on options. Technical specifications may change without notice. Stage specifications are subject to change without notice. Figures are nominal.

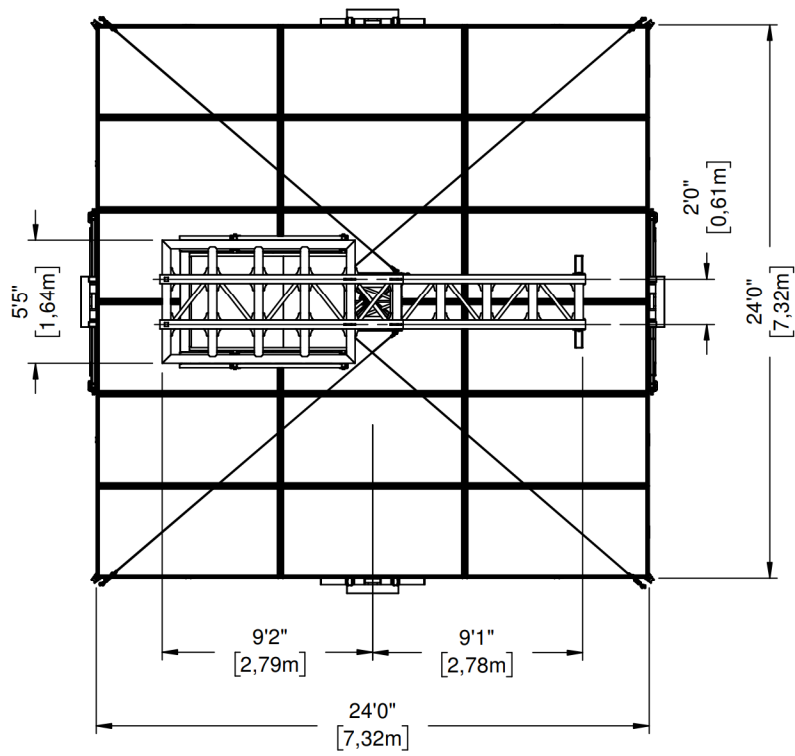
SIDE VIEW

HY
TOWER



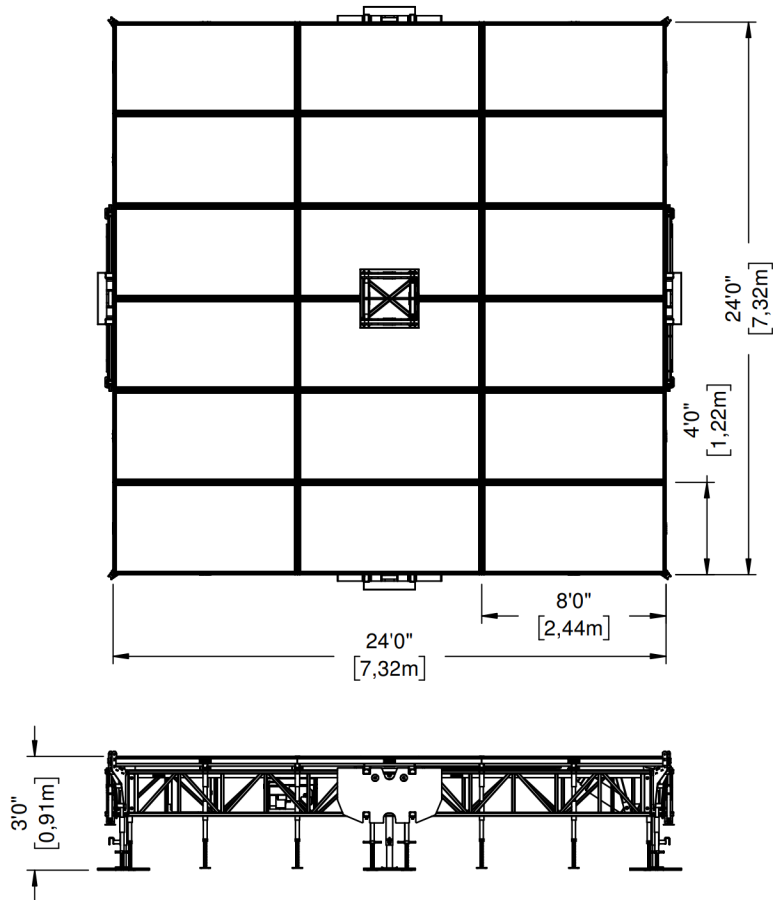
Drawings may show the HYTower equipped with optional accessories. May be sold separately.
 © 2023 - All rights reserved, Stageline Mobile Stage Inc. Any and all forms of adaptation or reproduction of this document including the plans and drawings, in whole or in part, are strictly forbidden without the written authorisation of Stageline Mobile Stage Inc. Mass may vary depending on options. Technical specifications may change without notice. Stage specifications are subject to change without notice. Figures are nominal.

TOP VIEW



Drawings may show the HYTower equipped with optional accessories. May be sold separately.
© 2023 - All rights reserved, Stageline Mobile Stage Inc. Any and all forms of adaptation or reproduction of this document including the plans and drawings, in whole or in part, are strictly forbidden without the written authorisation of Stageline Mobile Stage Inc. Mass may vary depending on options. Technical specifications may change without notice. Stage specifications are subject to change without notice. Figures are nominal.

FLOOR VIEW

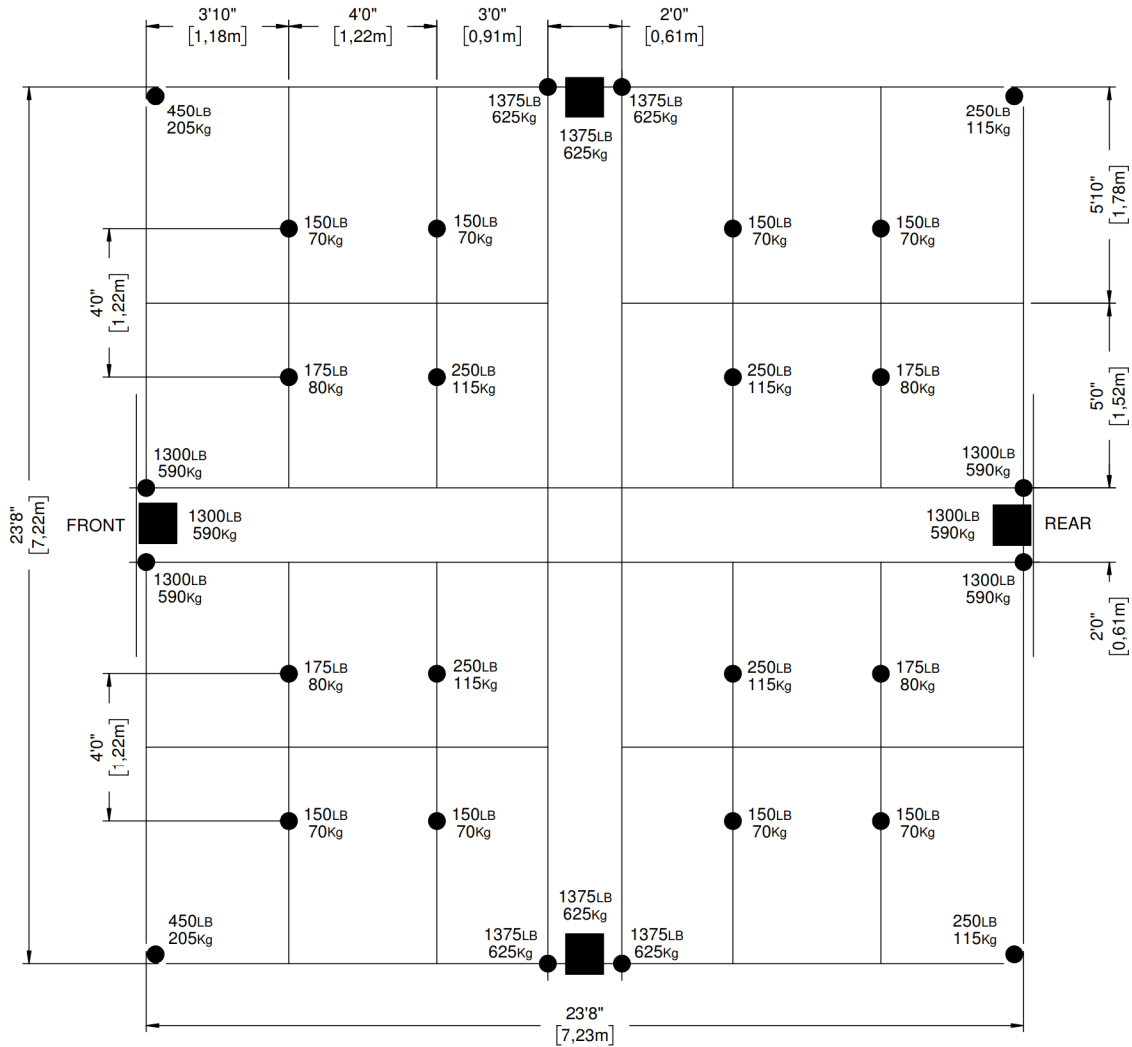


CAPACITY: 150 lb/ft² (732kg/m²)



Drawings may show the HYTower equipped with optional accessories. May be sold separately.
© 2023 - All rights reserved, Stageline Mobile Stage Inc. Any and all forms of adaptation or reproduction of this document including the plans and drawings, in whole or in part, are strictly forbidden without the written authorisation of Stageline Mobile Stage Inc. Mass may vary depending on options. Technical specifications may change without notice. Stage specifications are subject to change without notice. Figures are nominal.

DEAD LOAD GROUND SUPPORT



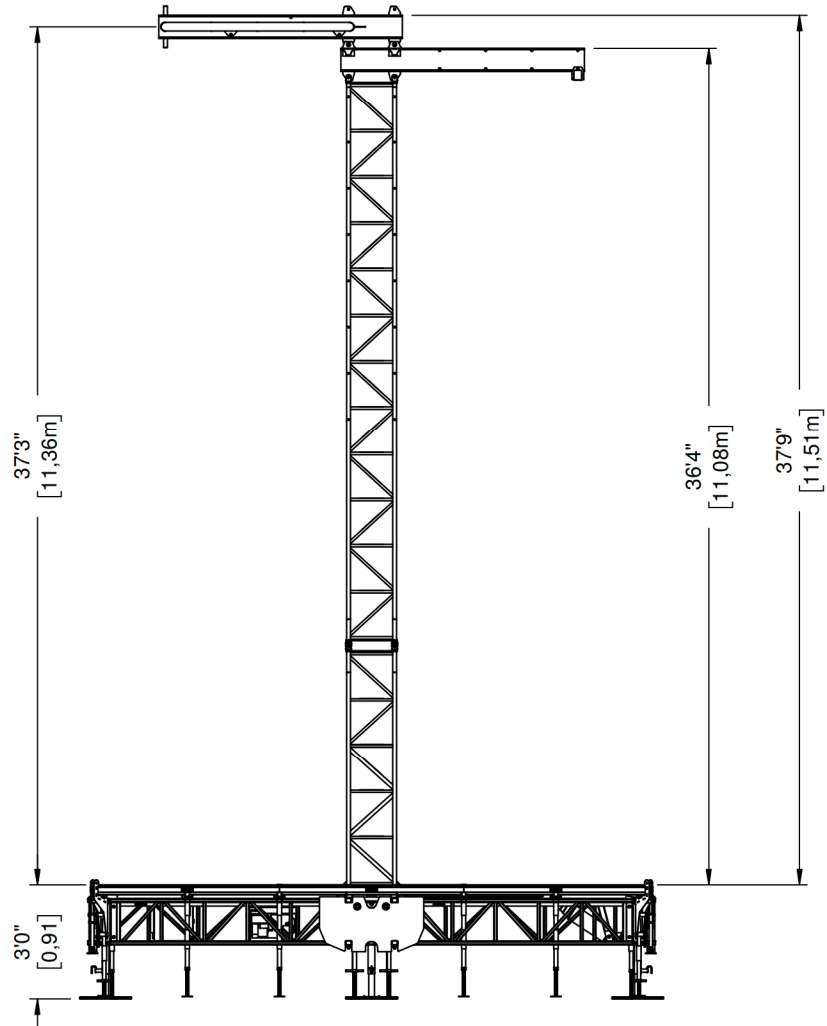
- Floor stabilizers, extensions and levelling jacks



Drawings may show the HYTower equipped with optional accessories. May be sold separately.
 © 2023 - All rights reserved, Stageline Mobile Stage Inc. Any and all forms of adaptation or reproduction of this document including the plans and drawings, in whole or in part, are strictly forbidden without the written authorisation of Stageline Mobile Stage Inc. Mass may vary depending on options. Technical specifications may change without notice. Stage specifications are subject to change without notice. Figures are nominal.

SCREEN SUPPORT OPTION

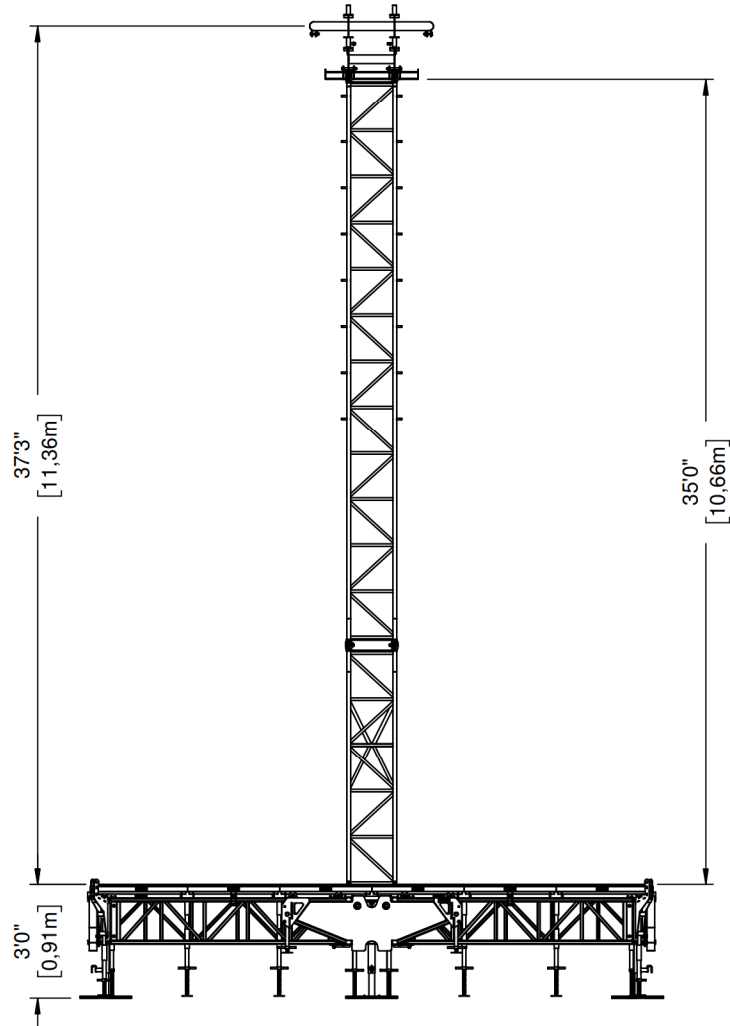
SIDE VIEW



Drawings may show the HYTower equipped with optional accessories. May be sold separately.
© 2023 - All rights reserved, Stageline Mobile Stage Inc. Any and all forms of adaptation or reproduction of this document including the plans and drawings, in whole or in part, are strictly forbidden without the written authorisation of Stageline Mobile Stage Inc. Mass may vary depending on options. Technical specifications may change without notice. Stage specifications are subject to change without notice. Figures are nominal.

SCREEN SUPPORT OPTION

FRONT VIEW



Drawings may show the HYTower equipped with optional accessories. May be sold separately.

© 2023 - All rights reserved, Stageline Mobile Stage Inc. Any and all forms of adaptation or reproduction of this document including the plans and drawings, in whole or in part, are strictly forbidden without the written authorisation of Stageline Mobile Stage Inc. Mass may vary depending on options. Technical specifications may change without notice. Stage specifications are subject to change without notice. Figures are nominal.

A THOROUGH UNDERSTANDING OF THE INTER-RELATED LOADINGS SHOWN IN THIS RIGGING PLAN IS NEEDED IN ORDER TO SAFELY USE THE HYTOWER AND TAKE FULL ADVANTAGE OF THE MANY RIGGING OPPORTUNITIES IT OFFERS.

The HYTower offers a variety of rigging options with regard to load capacity, placement and type.

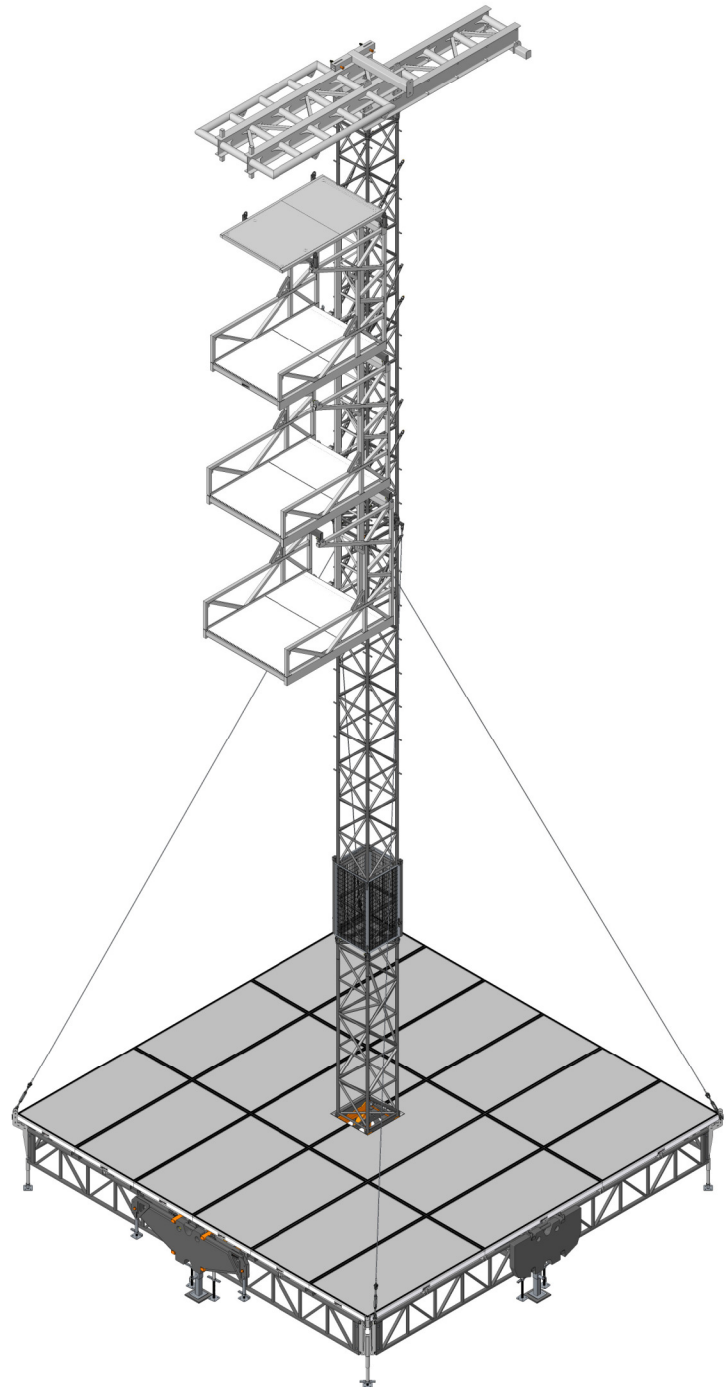
There are rigging pipes, trusses, roof rigging points and side overhang rigging beams.

This rigging plan locates and defines these rigging features, includes load capacity for each and describes maximum combinations of loads amongst features.

Take note of exclusions, maximum sub-totals in a group, load balance requirements, and maximum load bearing capacity.

The maximum load on the structure is less than the sum of the maximum load on each rigging feature.

Refer to Operator's Manual for procedures in regards to proper setup and setup methods of the tower and its options.

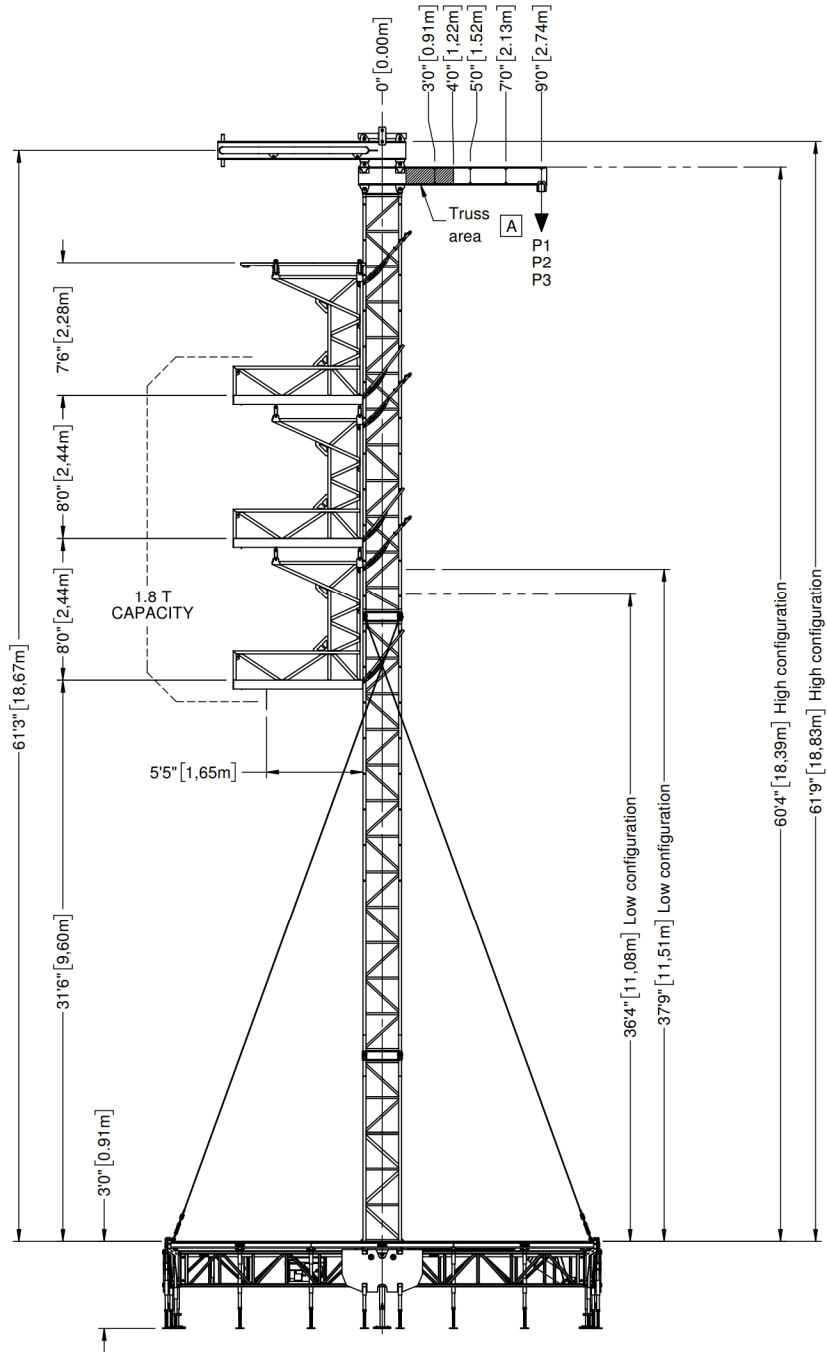


The information contained in the current document is final and must be considered as such. They are derived from design briefs and summarized to help the user plan rigging configurations safely. It is therefore mandatory that the user follows and respects the capabilities and limitations described herein. Overloading of stage components above their specified capacity may result in structural failure, equipment damage, injury or death. Stageline cannot be held responsible if the user, himself or subcontractors under his supervision, derogate from this document and/or the approved rigging plan. If a desired configuration cannot meet these requirements, the user must contact Stageline to analyse the case and obtain further instructions. Special restrictions and limitations may apply.

Certain authorities may require that a rig configuration plan, signed and sealed by a recognized member of a professional body, be available to allow the stage to be setup on their territory. This document was not intended to and cannot be used or considered as an official document or certificate to serve this purpose. Contact responsible authorities or Stageline for details.

RIGGING PLAN

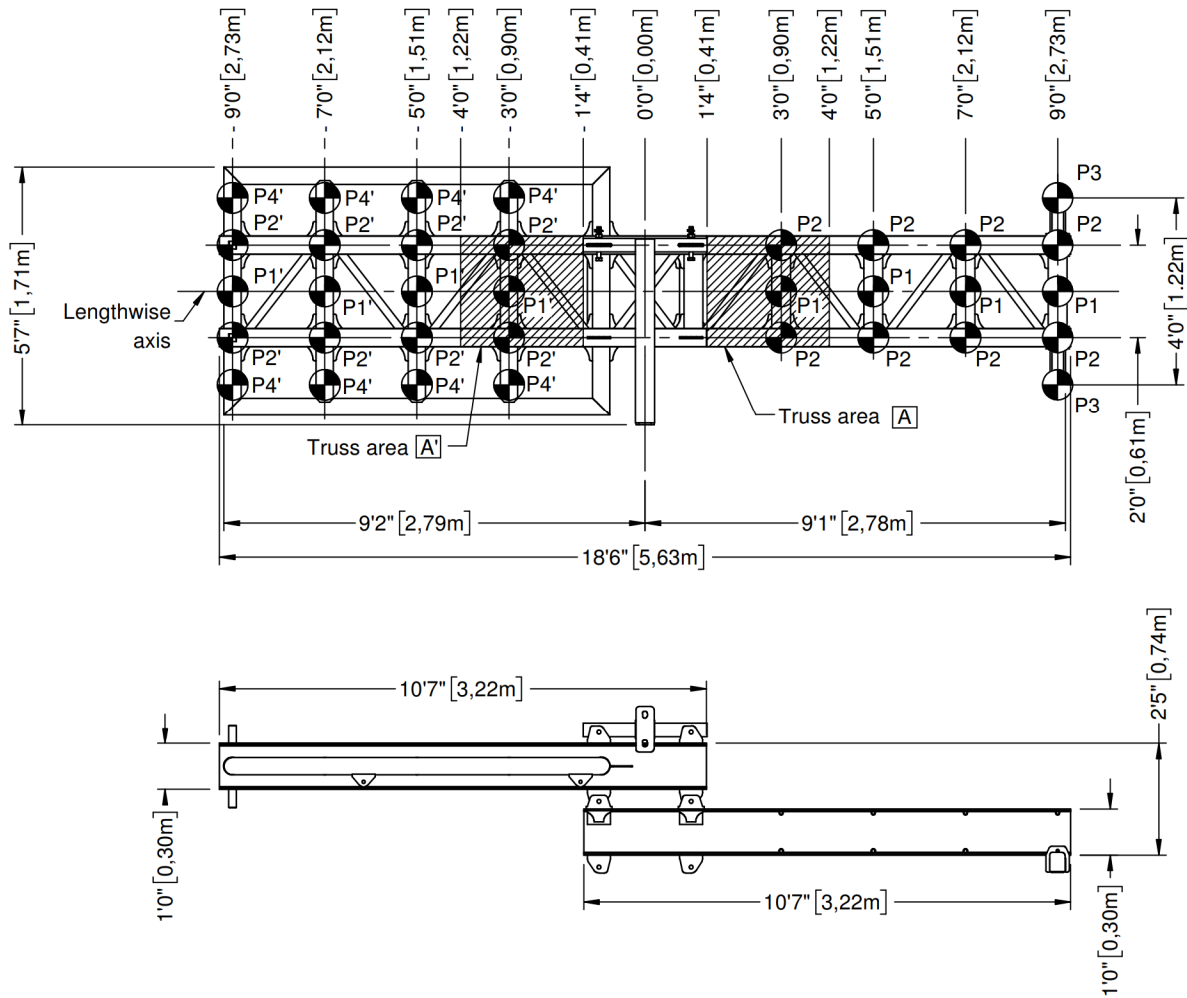
2/4



Drawings may show the HYTower equipped with optional accessories. May be sold separately.
 © 2023 - All rights reserved, Stageline Mobile Stage Inc. Any and all forms of adaptation or reproduction of this document including the plans and drawings, in whole or in part, are strictly forbidden without the written authorisation of Stageline Mobile Stage Inc. Mass may vary depending on options. Technical specifications may change without notice. Stage specifications are subject to change without notice. Figures are nominal.

RIGGING PLAN

3/4



MAXIMUM LOAD BEARING CAPACITY: 15,290 LB (6,935 KG)

CAPACITY OF POINTS:

- P1: 4,400 lb (1,995 kg)
- P2: 4,400 lb (1,995 kg) per pair
- P3: 4,400 lb (1,995 kg) per pair
- P4: 3,600 lb (1,632 kg) per pair
- Truss area A: 10,000 lb (4,536 kg)

FOLLOWSPOT PLATFORM CAPACITY:

- 5,290 lb (2,400 kg) total
- 1,322 lb (600 kg) per platform
- Follow spot platform capacity includes all equipment and workers.

RIGGING RESTRICTIONS:

- Total load on P1, P2 and P3 must not exceed 4,400 lb (1,995 kg). Total load on P1', P2' and P4' must not exceed 3,600 lb (1,632 kg).
- Paired points are located on each side of the Lengthwise Axis.
- P2 must be used in pair (symmetric load only).
- P3 must be used in pair (symmetric load only).
- P4 must be used in pair (symmetric load only).
- P1 to P4 points can be installed at 3', 5', 7' or 9', from tower center.
- Loads on the follow spot platforms must be within 5'5" (1.65m) from the edge of the tower.
- If a video screen is used, refer to VIDEO SCREEN RIGGING RESTRICTIONS on page 4 for details and limitations.
- If the platforms are not installed, the structure can be used for rigging. Maximum load bearing capacity remains the same. If they are installed, no rigging is allowed on the platforms side.



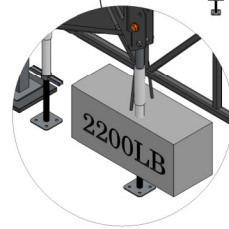
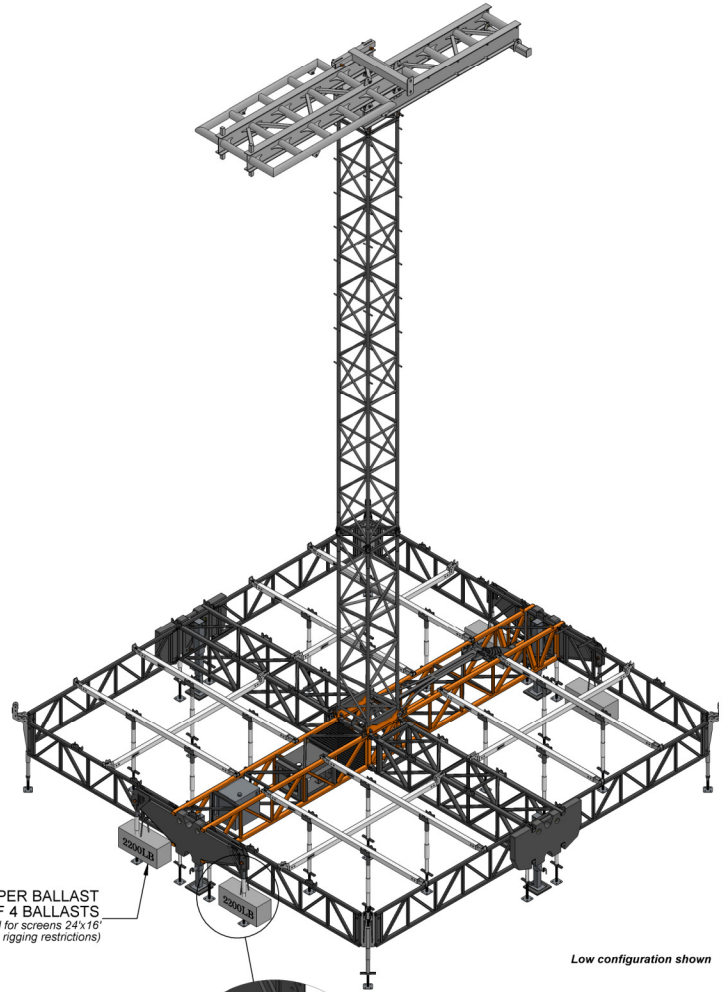
Drawings may show the HYTower equipped with optional accessories. May be sold separately.
 © 2023 - All rights reserved, Stageline Mobile Stage Inc. Any and all forms of adaptation or reproduction of this document including the plans and drawings, in whole or in part, are strictly forbidden without the written authorisation of Stageline Mobile Stage Inc. Mass may vary depending on options. Technical specifications may change without notice. Stage specifications are subject to change without notice. Figures are nominal.

VIDEO SCREEN RIGGING RESTRICTIONS:

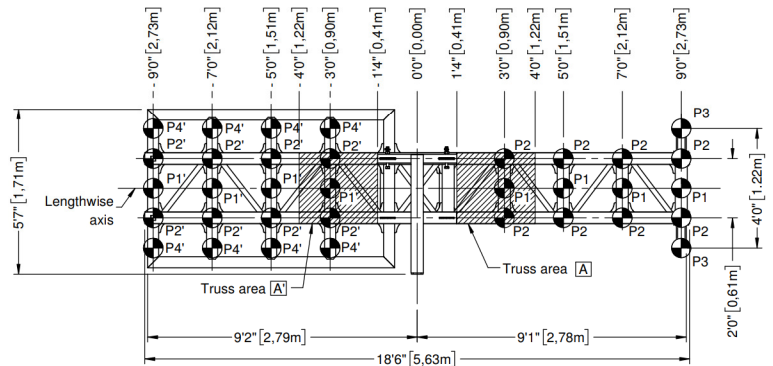
- Total load on P1s, P2s and P3s must not exceed 4,400 lb (1,995 kg) when Truss Area A is not used.
- When using Truss Area A, refer to chart below for residual point capacity.
- Screen can only be installed in short configuration (refer to page 2 of RIGGING PLAN for details).
- Maximum screen dimensions without additional ballast added to the structure : 16' x 9' (W x H). Maximum screen height from deck to bottom of screen : 28' in landscape view, 21' in portrait view.
- Maximum screen dimensions with additional ballast added to the structure : 24' x 16' (W x H). Maximum screen height from deck to bottom of screen : 15' in landscape view, 7' in portrait view.
- No follow spot platform can be used when screen is installed.

NOTE :

- No rigging truss is provided for truss area A.



RESIDUAL LOADS CHART			
Truss Area A		Total load on points	
LB	KG	LB	KG
10,000	4,536	0	0
9,000	4,082	400	181
8,000	3,628	800	363
7,000	3,175	1,200	544
6,000	2,721	1,700	771
5,000	2,268	2,100	952
4,000	1,814	2,600	1,179
3,000	1,361	3,000	1,361
2,000	907	3,500	1,587
1,000	454	3,900	1,769
0	0	4,400	1,995



827 L'Ange-Gardien Blvd., L'Assomption

Quebec, Canada J5W 1T3

1 450.589.1063 / North America 1 800.267.8243

stageline.com

