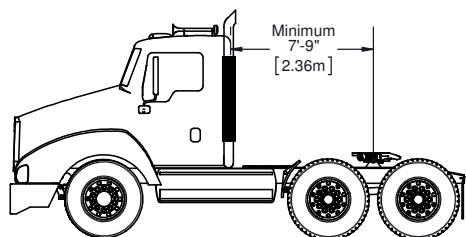
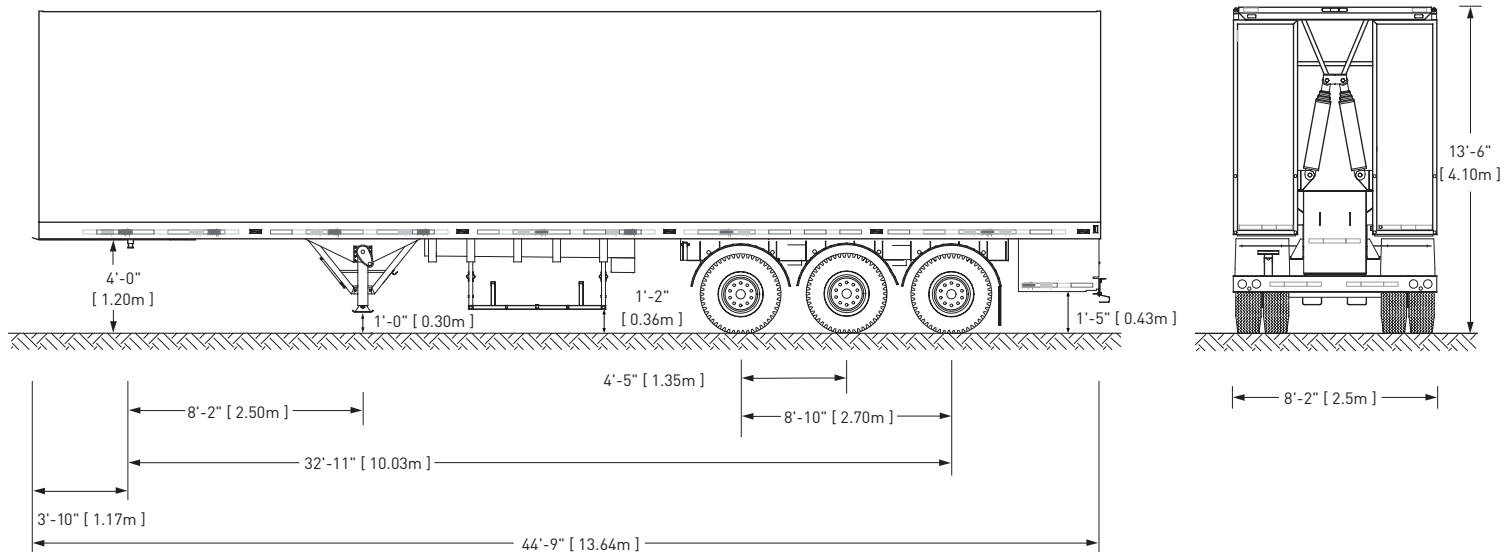




RENTAL DIVISION - DIVISION LOCATION

SAM440

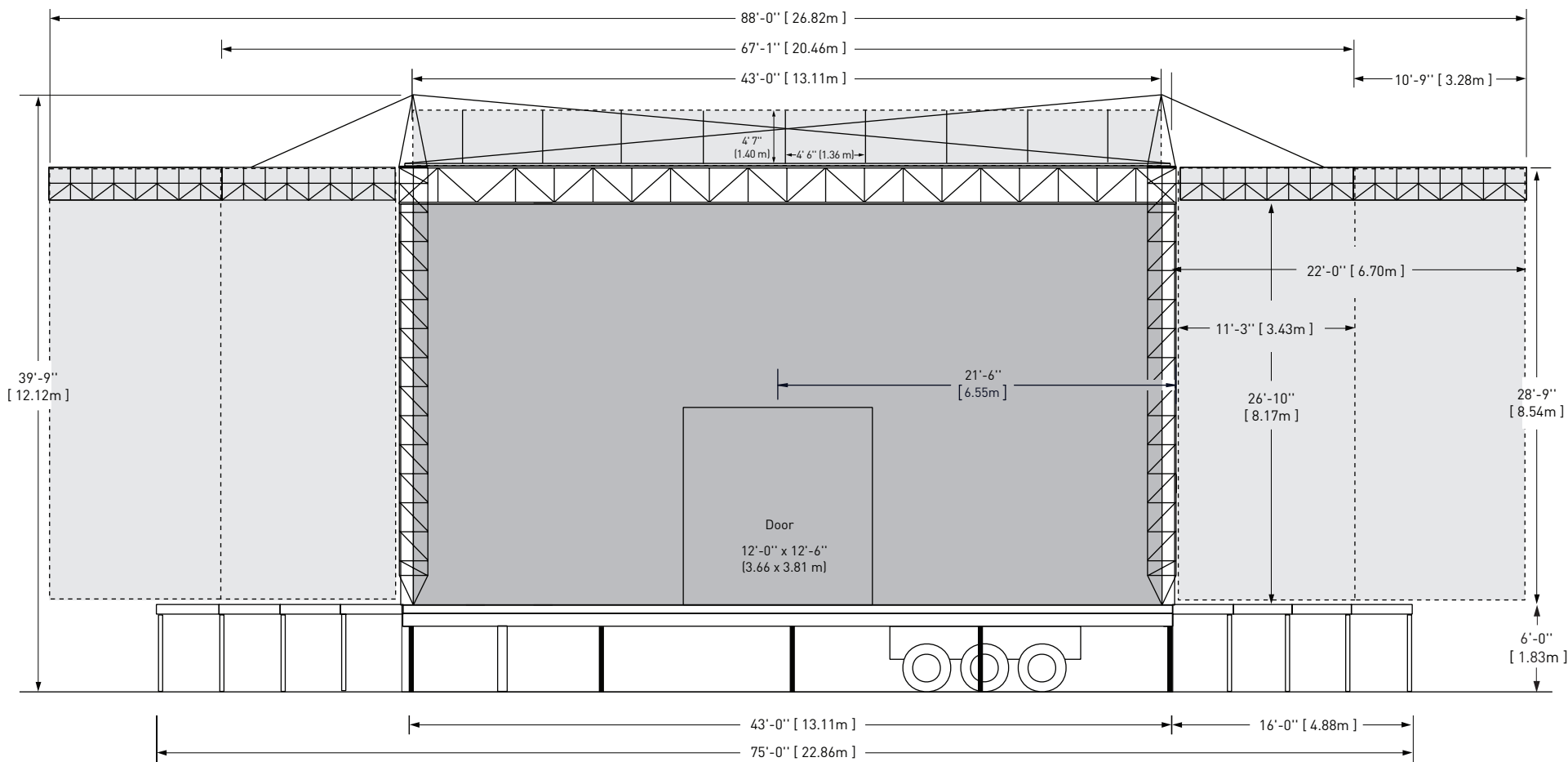
TECHNICAL DRAWINGS



Mass SAM 440	Standard Equipment	
	Lbs	Kg
Total Mass	57300	26000
Mass on Axle	37468	17000
Mass on Hitch	19800	9000

Drawings may show stage equipped with optional accessories. May be sold separately.

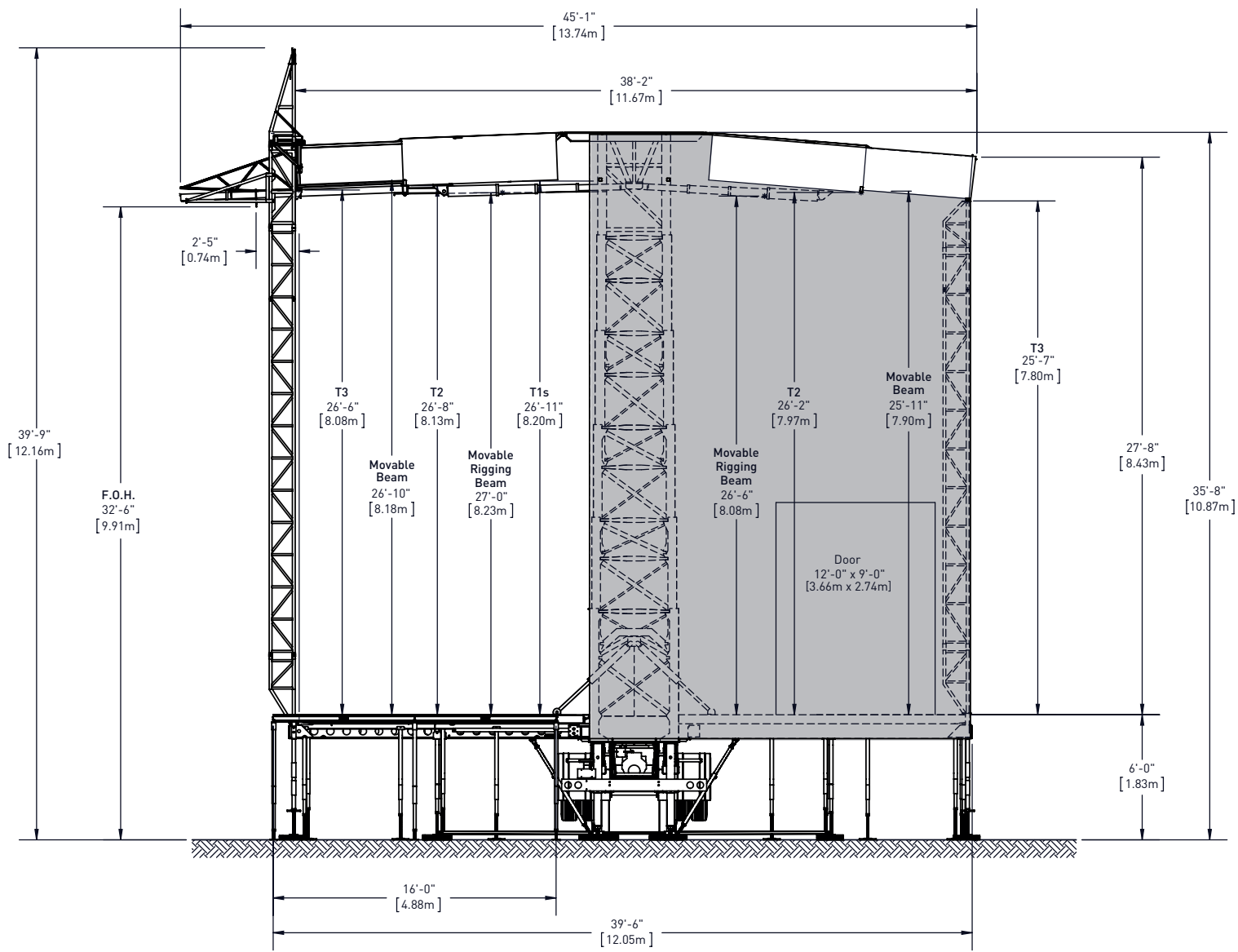
© 2020 - All rights reserved, Stageline Mobile Stage Inc. Any and all forms of adaptation or reproduction of this document including the plans and drawings, in whole or in part, are strictly forbidden without the written authorisation of Stageline Mobile Stage Inc. Mass may vary depending on options. Technical specifications may change without notice. Stage specifications are subject to change without notice. Figures are nominal.



- WINDWALL
- BANNER (For dimensions, please refer to Banner Book)

Drawings may show stage equipped with optional accessories. May be sold separately.

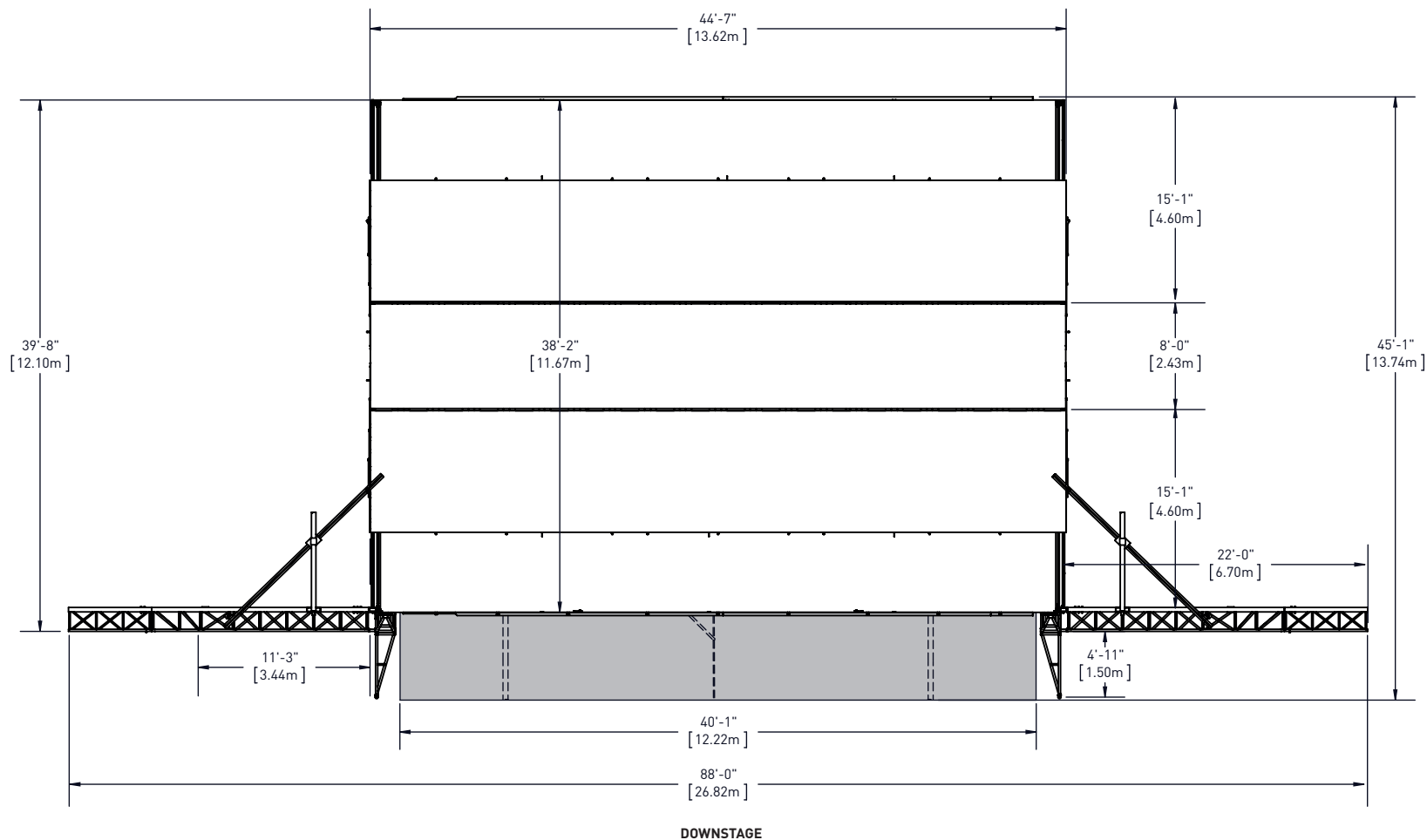
© 2020 - All rights reserved, Stageline Mobile Stage Inc. Any and all forms of adaptation or reproduction of this document including the plans and drawings, in whole or in part, are strictly forbidden without the written authorisation of Stageline Mobile Stage Inc. Mass may vary depending on options. Technical specifications may change without notice. Stage specifications are subject to change without notice. Figures are nominal.



WINDWALL

Drawings may show stage equipped with optional accessories. May be sold separately.

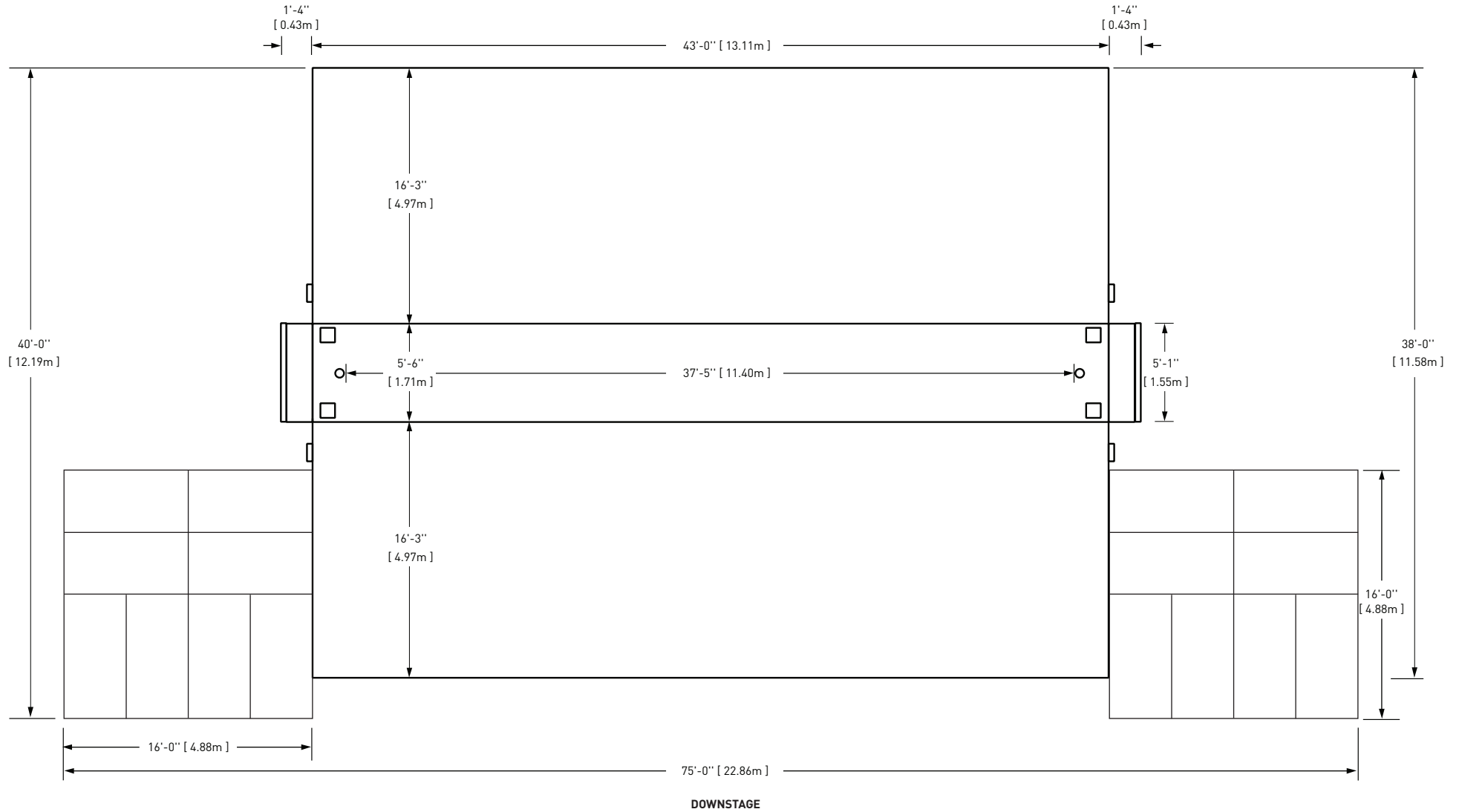
© 2020 - All rights reserved, Stageline Mobile Stage Inc. Any and all forms of adaptation or reproduction of this document including the plans and drawings, in whole or in part, are strictly forbidden without the written authorisation of Stageline Mobile Stage Inc. Mass may vary depending on options. Technical specifications may change without notice. Stage specifications are subject to change without notice. Figures are nominal.



WINDWALL

Drawings may show stage equipped with optional accessories. May be sold separately.

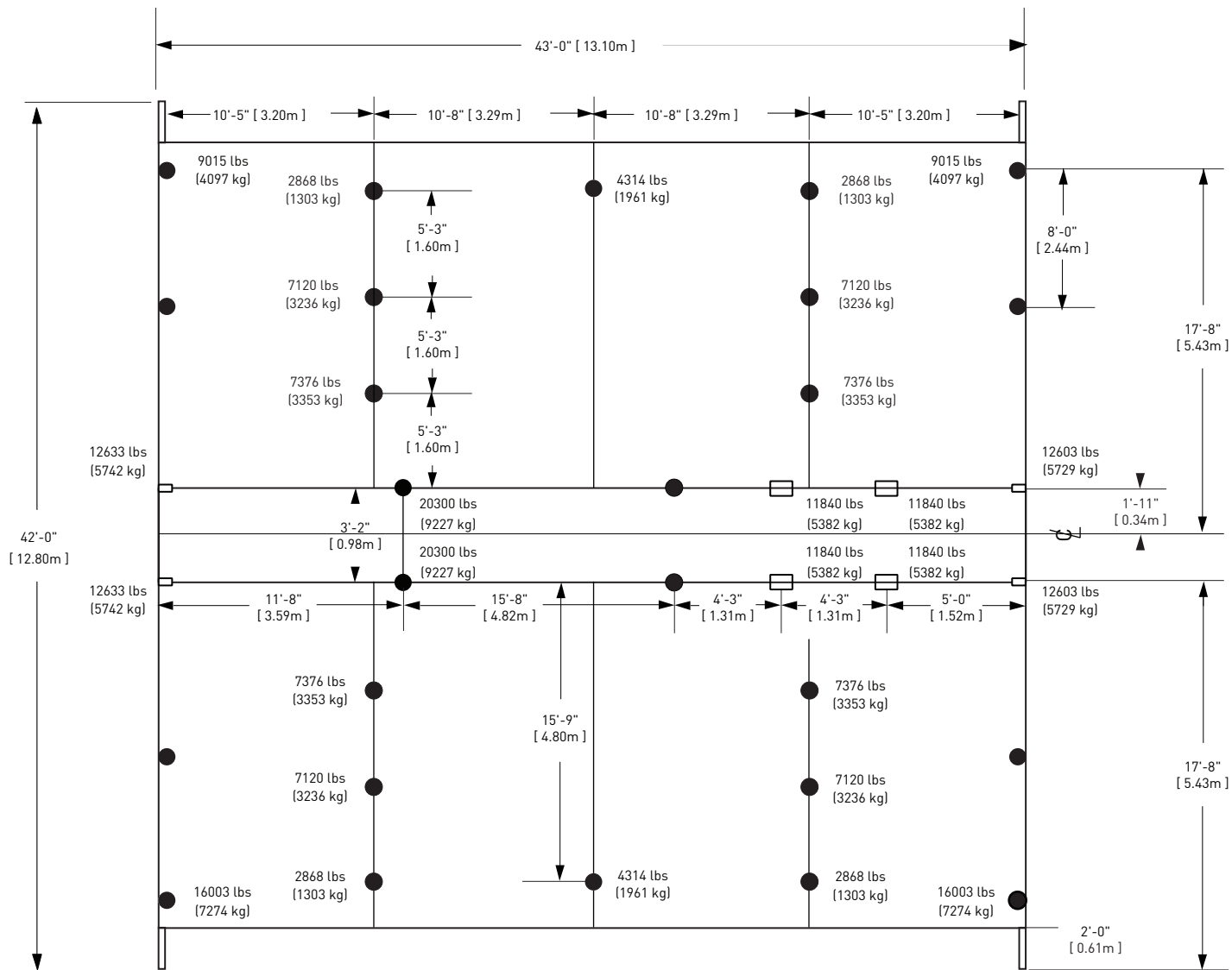
© 2020 - All rights reserved, Stageline Mobile Stage Inc. Any and all forms of adaptation or reproduction of this document including the plans and drawings, in whole or in part, are strictly forbidden without the written authorisation of Stageline Mobile Stage Inc. Mass may vary depending on options. Technical specifications may change without notice. Stage specifications are subject to change without notice. Figures are nominal.



CAPACITY: 100lbs/ft² (490kg/m²)

Drawings may show stage equipped with optional accessories. May be sold separately.

© 2020 - All rights reserved, Stageline Mobile Stage Inc. Any and all forms of adaptation or reproduction of this document including the plans and drawings, in whole or in part, are strictly forbidden without the written authorisation of Stageline Mobile Stage Inc. Mass may vary depending on options. Technical specifications may change without notice. Stage specifications are subject to change without notice. Figures are nominal.

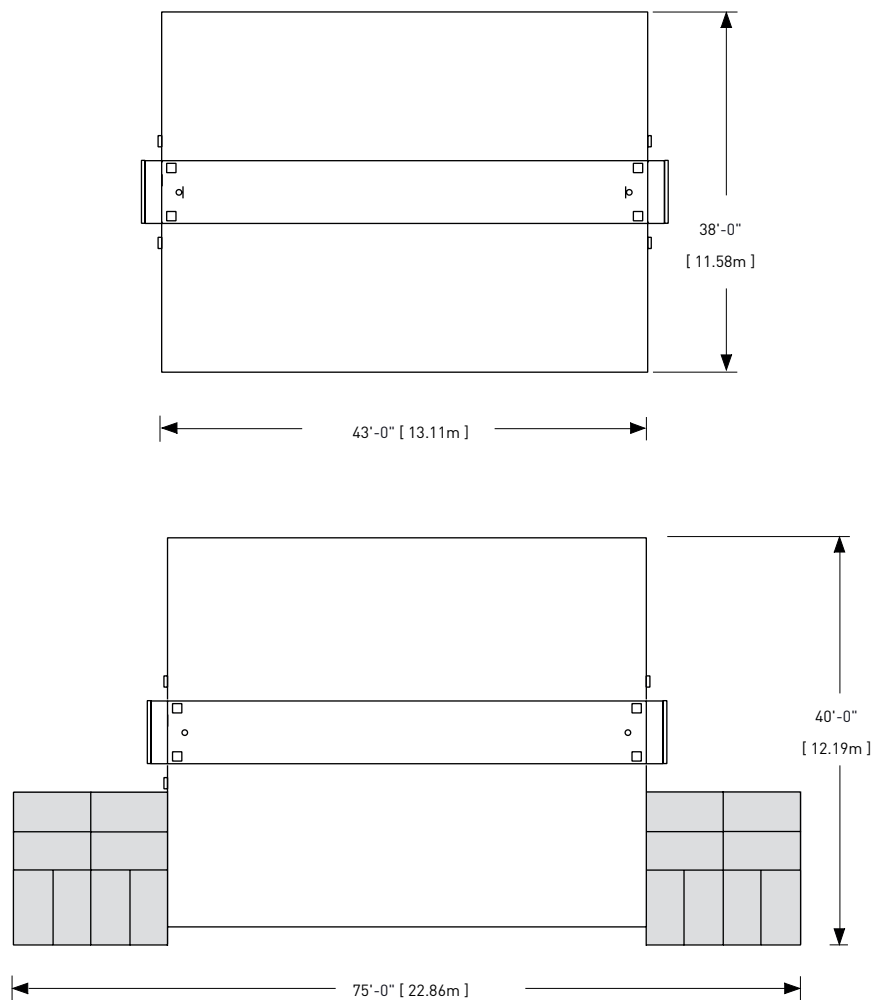


● FLOOR STABILIZERS, EXTENSIONS AND LEVELLING JACKS

Drawings may show stage equipped with optional accessories. May be sold separately.

© 2020 - All rights reserved, Stageline Mobile Stage Inc. Any and all forms of adaptation or reproduction of this document including the plans and drawings, in whole or in part, are strictly forbidden without the written authorisation of Stageline Mobile Stage Inc. Mass may vary depending on options. Technical specifications may change without notice. Stage specifications are subject to change without notice. Figures are nominal.

STANDARD CONFIGURATIONS



PLATFORM

Drawings may show stage equipped with optional accessories. May be sold separately.

© 2020 - All rights reserved, Stageline Mobile Stage Inc. Any and all forms of adaptation or reproduction of this document including the plans and drawings, in whole or in part, are strictly forbidden without the written authorisation of Stageline Mobile Stage Inc. Mass may vary depending on options. Technical specifications may change without notice. Stage specifications are subject to change without notice. Figures are nominal.

A thorough understanding of the inter-related loadings shown in this rigging plan is needed in order to safely use this mobile stage roof and to take full advantage of the many rigging opportunities it offers.

This mobile stage roof offers a variety of rigging options with regard to load capacity, placement and type.

There are trusses, rigging pipes, front overhang rigging pipes, side overhang rigging beams, line array rigging beams and roof rigging points.

This rigging plan locates and defines these rigging features, includes load capacity for each and describes maximum combinations of loads amongst features.

Take note of exclusions, maximum sub-totals in a group, load balance requirements, maximum lifting capacity of roof and maximum rigging load on roof.

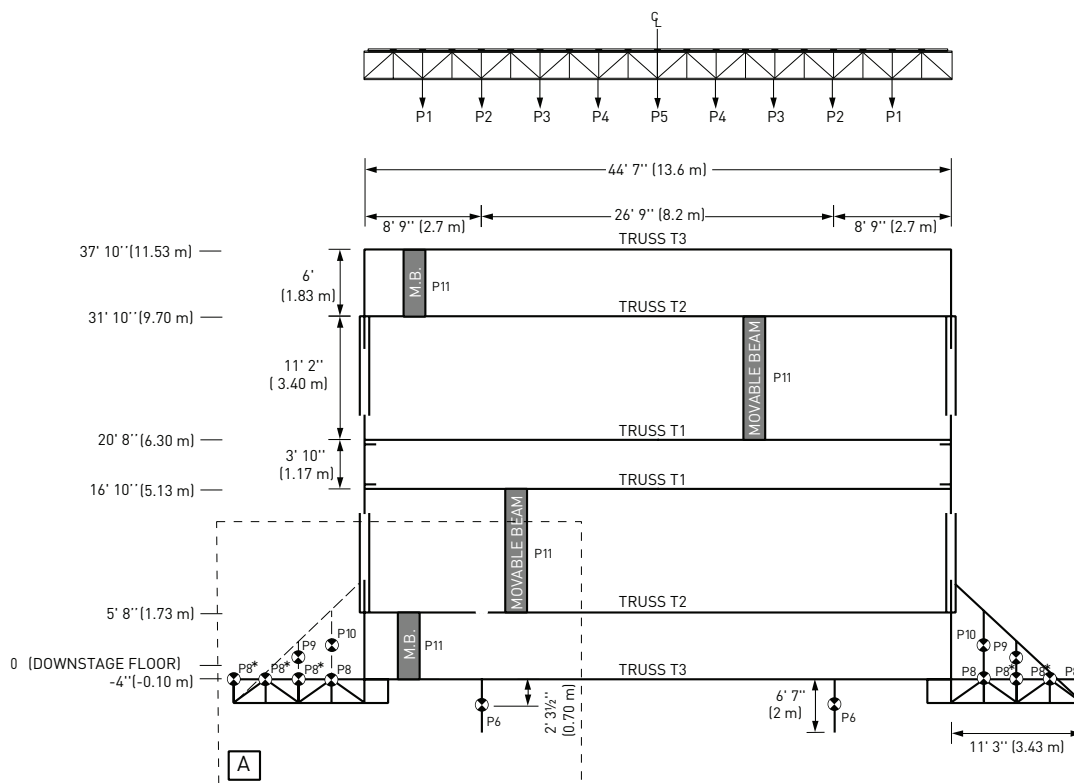
The maximum load on the roof is less than the sum of the maximum load on each rigging feature.

RIGGING RESTRICTIONS:

- Use P1s, P2s, P3s, P4s or P5 alone.
- The sum of all rigging points shown in area A of both sides of roof panels cannot exceed 9000 lbs (4090 kg).
- Total load on P8s must not exceed 6600 lbs (2995 kg) per side and not exceed 6000 lbs (2722 kg) if using only P8*s.
- Total load on downstage T3 must not exceed 4400 lbs (2000 kg).
- Total load on P9 or P10 must not exceed 4000 lbs (1814 kg) per side on 1 or 2 points.
- No additional load can be rigged on side overhang truss when line array system is being used.

NOTES:

Outside diameter of rigging bars and of lower chord of trusses is 2" (5 cm). Distance between each lower chord node on T1s, T2s and T3s is 4' 6" (1.36 m). Distance between each lower chord node on Side Overhang Truss is 2' 9½" (0.86 m). Line array beam (Option) can be positioned at 2' 6" (0.76m) or at 5' (1.52 m) from roof extension panel. Shortest beam is 3' 2" (0.98 m) long and longest is 5' 8" (1.72 m).



MAXIMUM LOAD BEARING CAPACITY: 47000 lbs [21319 kg]*

*All corner posts must be installed and pinned.

MAXIMUM LOAD CAPACITY		
Point No.	Lbs	Kg
P9 & P10	4000	1814
P1, P2, P8 & P11	2000	910
P3 & P5	1500	680
P4 & P6	1000	454