

SAM750

SAM750 PRODUCTION REQUIREMENTS

INNOVATIVE MOBILE STAGING



PRODUCTION REQUIREMENTS

SAM750

EQUIPMENT REQUIREMENTS

5000 LBS FORKLIFT WITH EXTENSIONS (IF POSSIBLE)

Quantity: 2
Required Duration: Entire time¹
Example: Caterpillar P5000²

10 000 LBS TELEHANDLER

Quantity: 1
Required Duration: Entire time¹
Example: Caterpillar TH255C²

45' MANLIFT (80' MANLIFT IF RIGGING IS DONE ONCE THE ROOF IS LIFTED IN POSITION)

Quantity: 1
Required Duration: Entire time¹
Example: Genie S-80²

60 TON CRANE

Quantity: 1
Required Duration: Load IN day 1, Load OUT day 2. *Times will be determined and specified on supplied Technical Rider*

Note: Crane supplier must provide the following rigging equipment:

- 4 x 20,000 lbs 12' sling
- 4 x 7/8" shackles
- 4 x 1" shackles.

GOLF CART

Quantity: 1
Required Duration: Entire time¹

REQUIRED MAN POWER

STAGEHANDS

Quantity: 16
Required Duration: All Load IN and Load OUT days. *Times will be determined and specified on supplied Technical Rider*

FORKLIFT OPERATORS

Quantity: 3
Required Duration: All Load IN and Load OUT days. *Times will be determined and specified on supplied Technical Rider*

RIGGERS

Quantity: 5 (4 x upriggers and 1x downrigger)
Required Duration: All Load IN and Load OUT days. *Times will be determined and specified on supplied Technical Rider*

ELECTRICIAN (FOR STAGE GROUNDING AND ELECTRICAL CONNECTIONS)

Quantity: 1
Required Duration: Load IN day 2 and Load OUT day 1. *Times will be determined and specified on supplied Technical Rider*

¹ Entire time implies from the Setup of stage day 1 through to and including Tear down of Stage day 2, as indicated on the supplied Technical Rider.

² These are examples of specific makes/brands, the exact product is not mandatory, a similar product will suffice.

PRODUCTION REQUIREMENTS

SAM750

BALLAST REQUIREMENTS Additional ballast requirements may be necessary upon a rigging plan review.

2000 LBS CONCRETE BLOCKS WITH TOP MOUNTED HOOK FOR BANNERS³ – FOR LATERAL BANNERS

Quantity: 8
Required Duration: Entire time¹

6600 LBS CONCRETE BLOCKS WITH TOP MOUNTED HOOK FOR WING BALLAST³

Quantity: 4
Required Duration: Entire time¹

POWER REQUIREMENT

1 X 120/208 VOLTS, 3 PHASES, 100 AMPS GENERATOR

Quantity: 1
Required Duration: Entire time¹

LODGING & PARKING REQUIREMENTS

HOTELS

Quantity: 8 (all double rooms)
Required Duration: Times to be determined and discussed with Logistics agent

ACCESS TO AIR CONDITIONED OFFICE WITH WIFI

Quantity: 1
Required Duration: Entire time¹

ON SITE PARKING FOR CREW VEHICLE

Quantity: 2
Required Duration: Entire time¹

SECURED BONEYARD PARKING

Quantity: 3 x 53' trailers
Required Duration: Entire time¹

¹ Entire time implies from the Setup of stage day 1 through to and including Tear down of Stage day 2, as indicated on the supplied Technical Rider.

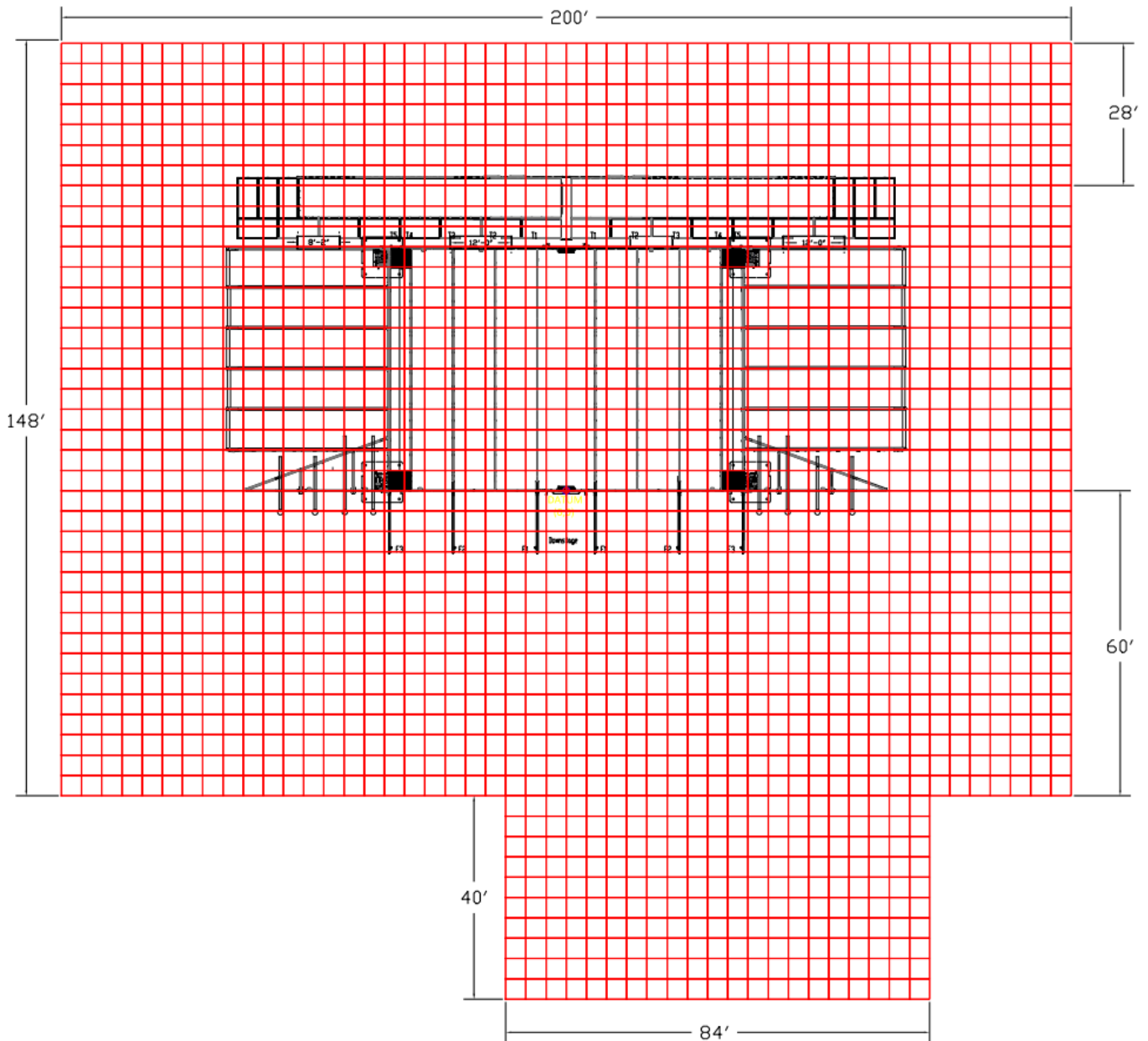
³ Maximum Ballast height: 3' (914mm)/Concrete or Steel Ballast, no water ballast/Ballast anchor must be able to support its own weight, without being deformed/
Ballast anchor must have a minimum opening of 2", enough to pass a chain.
Banner Ballast specifics: (to determine cable quantity please refer to supplied banner specification sheet)
- 2 cable banners: The extremities of the banners require minimum 3000 lbs of ballast
- 4 cable banners: The total sum of the ballast must be 6000 lbs or greater, denominations no less than 1500 lbs.

PRODUCTION REQUIREMENTS

SAM750

GROUND PROTECTION

If the stage is installed on a soft surface or a non-driveable surface, the production is responsible to install proper load bearing ground protection. Please see drawing below showing ground protection footprint required. Stageline also requires an area to unload flatbeds, this area cannot be further than 100 ft. from the main stage and can have no obstructions, ie. tunnels, gates, etc.. The path from the flatbed unloading area to the stage must be driveable and if applicable have ground coverage as well.



827 L'Ange-Gardien Blvd., L'Assomption

Quebec, Canada J5W 1T3

1 450.589.1063 / North America 1 800.267.8243

stageline.com

MOBILE STAGES | SALES & RENTALS

