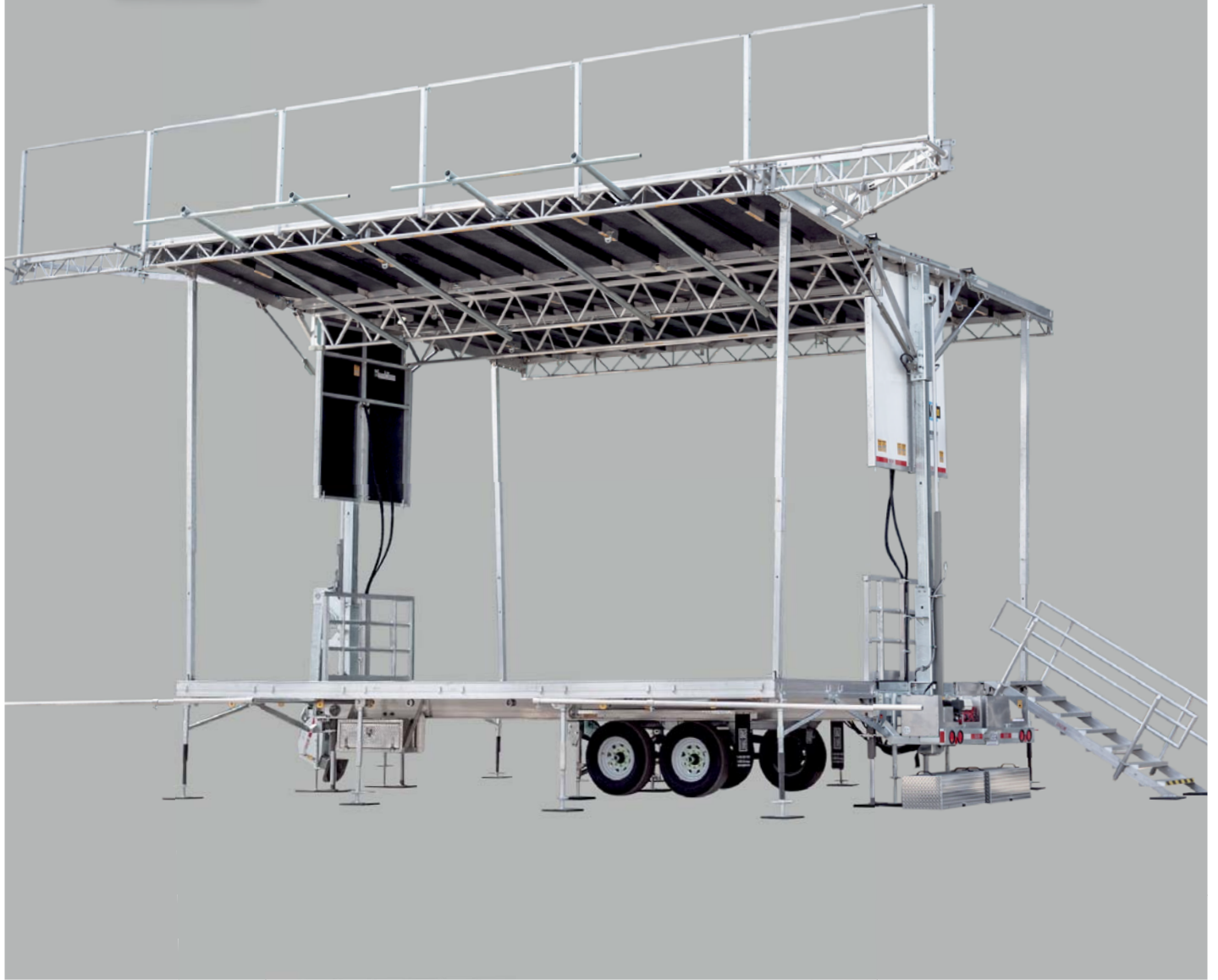


**STAGE  
LINE**

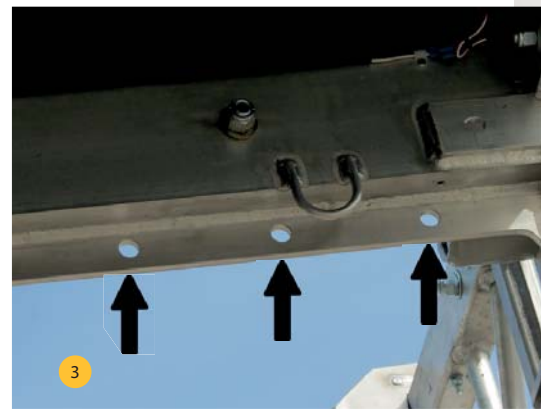


**SL 100 NEW FEATURES  
WE'VE KEPT THE BEST AND MADE IT BETTER**

# OVERALL

## RIGGING EFFICIENCY AND STRENGTH

TOTAL RIGGING CAPACITY: 11,800 lb (5,351 kg)



### FLYBAYS

- 1 Permanently mounted side rigging trusses with a 1,500 lb (680 kg) capacity per side, the truss deploys in seconds.
- 2 Line array capability with multiple configurations. Optional item - refer to rigging plan for details.
- 3 Rigging points for PA in front of corner posts and under the roof.

**INCREASED RIGGING OPTIONS WITH THE 6' (2M) SIDE RIGGING TRUSSES FOR LED SCREEN OR SPEAKERS.**

## 1 T2 TRUSSES

Increased capacity to 1,200 lbs (544 kg)

## 2 REDESIGNED FOH

Capacity of 700 lbs (317 kg)

## CERTIFICATION

IBC 2015 compliant  
(International Building Code)



## DECK AND CHASSIS

A stronger deck now at 150 lb/ft<sup>2</sup> ( 732 kg/m<sup>2</sup>).

Leg installation with steel components instead of cables.

Cross braced steel members added to support legs under the mid-section of trailer frame.

## STRONGER LEGS EQUALS GREATER STABILITY.



## MOVABLE RIGGING POINTS

24 built in rigging points with a capacity of up to 1,200 lbs (544 kg)

## WIND RESISTANCE

Up to 115 mph (185km/h)

# NEW FEATURES

THAT MAKE THE SL 100 EVEN EASIER TO USE

## HYDRAULICS

Hydraulic deployment with levers positioned closer to downstage and upstage panels for better visibility;

- 1 Redesigned end panels for complete unobstructed view during hydraulic roof lifting operation; Electric starter included.

## BANNERS & SKIRT

- 2 Roof top and side banner system simplified with more identical components;
- 3 Banner pipes installed with an easy key connectors. No pins needed;
- 4 Precut skirt holes for banner pipes.

## STORAGE

- 5 Corner poles stored in roof panels installed by one person;
- 6 Custom design racks for all loose staging components; extension legs, banner kit and line array trusses (optional).

## STAGE

- 7 Corner post connectors redesigned and reinforced;
- 8 Permanently installed guardrail and cargo bumper; Additional storage compartment included.

## LIGHTS

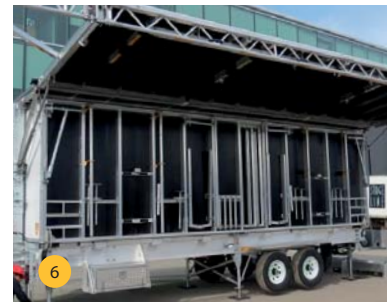
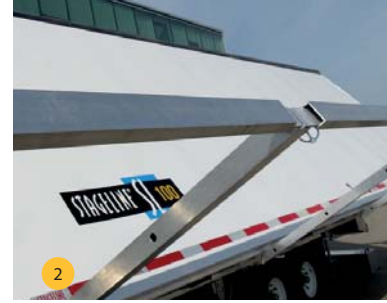
4 LED work lights powered by battery;  
2 in the roof - 2 under chassis.

## BATTERY

- 9 Battery recharging when 110v outlet is connected and when truck is attached and connected (12 volt);
- 9 Battery system used to power 3 different elements : work lights, emergency breakaway system and engine starter.

## SAFETY

- 10 Optional engine kill switch;
- Steps for easy access to pin telescoping sections;
- 11 Built in ground lug.



**LESS HANDLING FOR AN EASIER SET-UP**