

SL100

THE SL100  
IN A CLASS OF ITS OWN



STAGE  
LINE



# STAGELINE ADVANTAGES

---

**STAGELINE, THE SPECIALISTS FOR OVER 35 YEARS IN DESIGNING, PRODUCING AND DELIVERING THE SAFEST AND MOST INNOVATIVE MOBILE STAGES TO OUTDOOR EVENTS.**

- Most requested mobile stage in its category
- Holds the market lead in rigging & wind resistance
- Built to last 25 years and more
- Outstanding payback and great resale value



SL100





# IT ALL STARTS ON THE ROAD

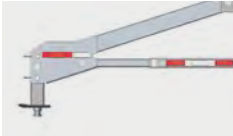
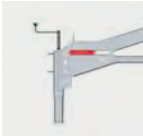
---

## STAGELINE MOBILE STAGES ARE ENGINEERED FOR THE ROAD.

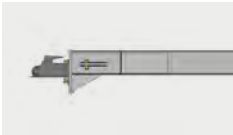
Before its main usage as an outdoor stage, a mobile stage must perform as a road legal trailer.

Stageline advanced design combines a custom chassis with multiple hinged panels and telescoping structures that will not alter in performance from mileage and bad roads. It results in excellent road handling and safety year after year.

## HAULING OPTIONS



Gooseneck or king pin



Drawbar for pintle hook  
or ball hitch





# A HIGH PERFORMANCE STAGE

---

## WITH A COMPLETE HYDRAULIC SET UP

- Fast and controlled operations
- Precision designed cylinders with safety block valves
- Low maintenance

1



Position & level the trailer.

2



Hydraulically deploy the floor and roof panels.

3



Hang sound, lighting, banners, windwalls and sets from ground and deck level.

4



Raise the roof with up to 3,800 lbs (1,725 kg) of show equipment.  
Install stairs, guardrails and add accessories.



# AT A GLANCE



## FLOOR

24' x 20' (7 m x 6 m)  
up to 40' x 28' (12 m x 8 m)  
with extension platforms

## SET-UP



2 technicians\*



30 minutes

## WIND RESISTANCE

115 mph (185 km/h)  
without windwalls

77 mph (123 km/h) with windwalls

## RIGGING

11,400 lb (5,190 kg)

6' outriggers on each side /  
1,500 lb (680kg) per side

\* Stageline promotes safe working habits by having a minimum of two workers on every job site.

# SHOWCASE YOUR SPONSORS & EVENTS

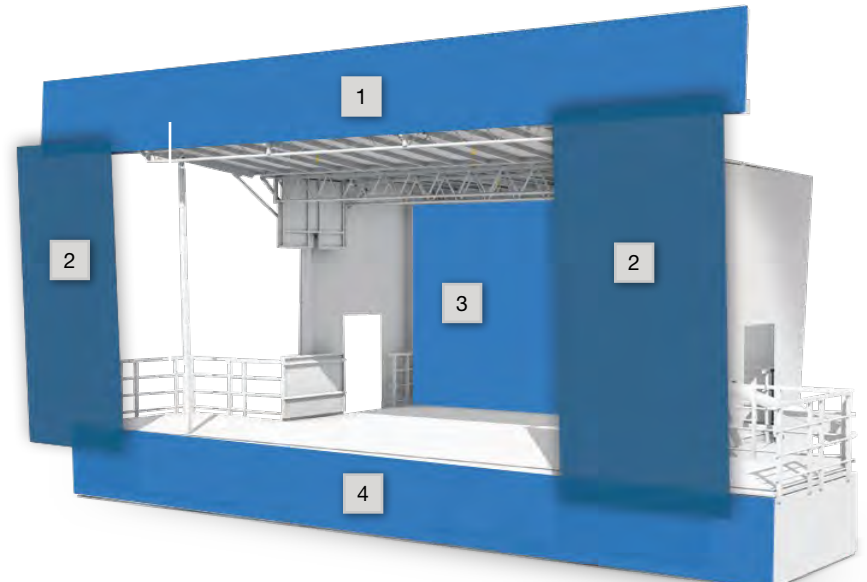
---

## On the road trailer wrap advertising panels

24' x 7' (7 m X 2 m) - rivet-free panels with gel coating that improve graphics application and appearance.

## MAXIMUM BANNER SPACE

- 1 Top banner 37' x 4' (11 m x 1.2 m)
- 2 2 Side banners 6' x 16' (1.8 m x 5 m)
- 3 Backdrop 23' x 13' (7.1 m x 4 m)
- 4 Skirt 40' x 4' (12.2 m x 1.4 m)





Lake Wales High School

**LV**  
**YOU**  
ARE YOUR  
**BROTHER'S**  
**KEEPER**

**LV**  
**YOU** ARE YOUR **BROTHER'S** **KEEPER**

**LV**  
**YOU**  
ARE YOUR  
**BROTHER'S**  
**KEEPER**

# SAFE & EFFICIENT INSTALLATION

---

## **WORK FROM GROUND & DECK LEVEL**

All the work and installation of sound, light, banner is done from deck and ground level reducing the risk of climbing accidents.

**3,800 LB (1,725 KG) OF HYDRAULIC LIFTING CAPACITY**

## **TOTALLY SELF STANDING**

No ballast or cables required

## **SUPERIOR DESIGN FOR LOADS & RIGGING**

The SL100 is designed, built and tested with the highest load and rigging design criteria in the industry – up to 2 times the permitted load.









**Deck & chassis at 150 lb/ft<sup>2</sup> (732 kg/m<sup>2</sup>) meets IBC & NBC standards**  
Cross braced steel members added to support legs under the mid-section of trailer frame.



**Storage**  
Custom underfloor storage system for staging components.



**Storage**  
Corner posts stored in roof panels. Easy to access.





### **Raise & lower the roof securely with double mast lifting mechanism**

A set of sturdy masts lifts and lowers the roof and show support equipment. They function with balanced or unbalanced loads even in difficult weather conditions.



### **Lights**

4 battery powered LED work lights.  
2 in the roof – 2 under the floor.



### **Battery**

Battery system for work lights, emergency breakaway system and engine starter.

# MORE RIGGING POSSIBILITIES TO PLAY WITH

---

## Multiple rigging options

- 1 24 built in rigging points with a capacity of up to 1,500 lb (680 kg).

## Movable rigging brackets

- 2 4 movable rigging brackets provided.

## Front overhang pipes

- 3 Capacity of 700 lb (317 kg) at 2'-9" (0.84 m) from roof edge – 9' 4" (2.85 m) rigging pipe.

## T2 Trusses

- 4 Strong capacity of 1,200 lb (544 kg).

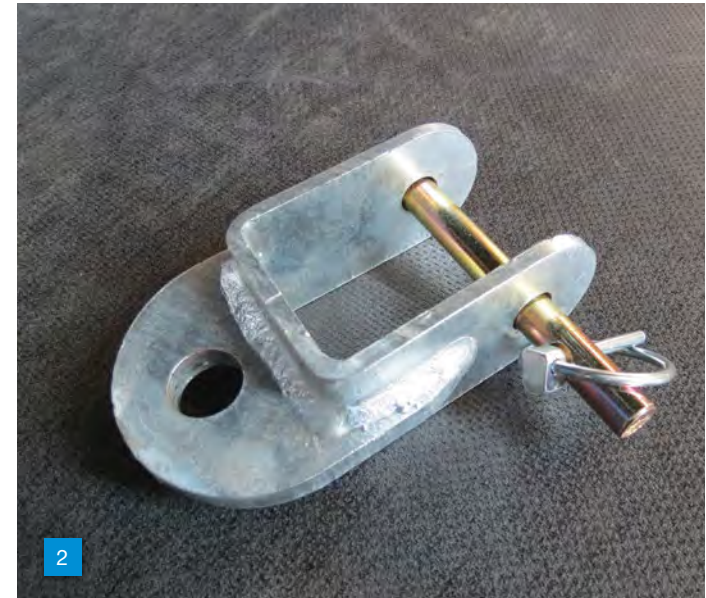






Photo: Upstage Crew Services

# 6' SIDE RIGGING TRUSS

---

## Standard Flybay

1,500 lb (680 kg) capacity per side.

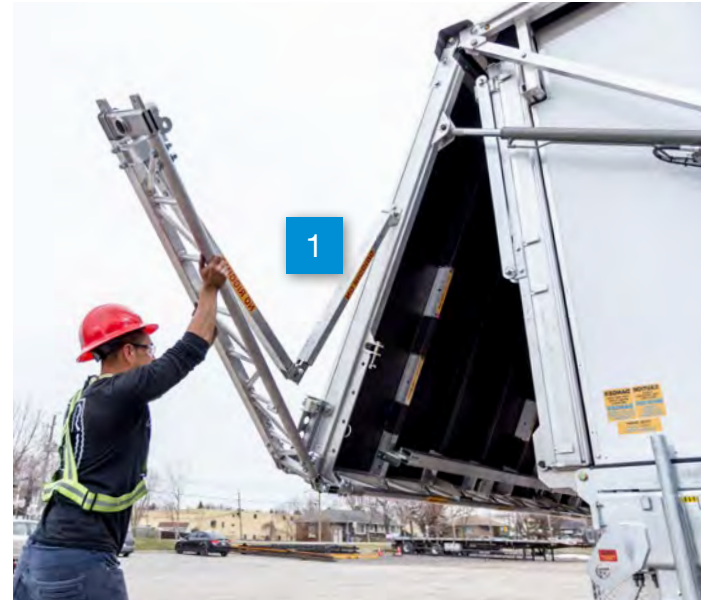
**1** Truss deploys in seconds.

## Optional Flybay

**2** Line array and screen rigging capability with multiple configurations.

## Rigging points for PA

**3** In front of all 4 corner posts. PA extension bars available.





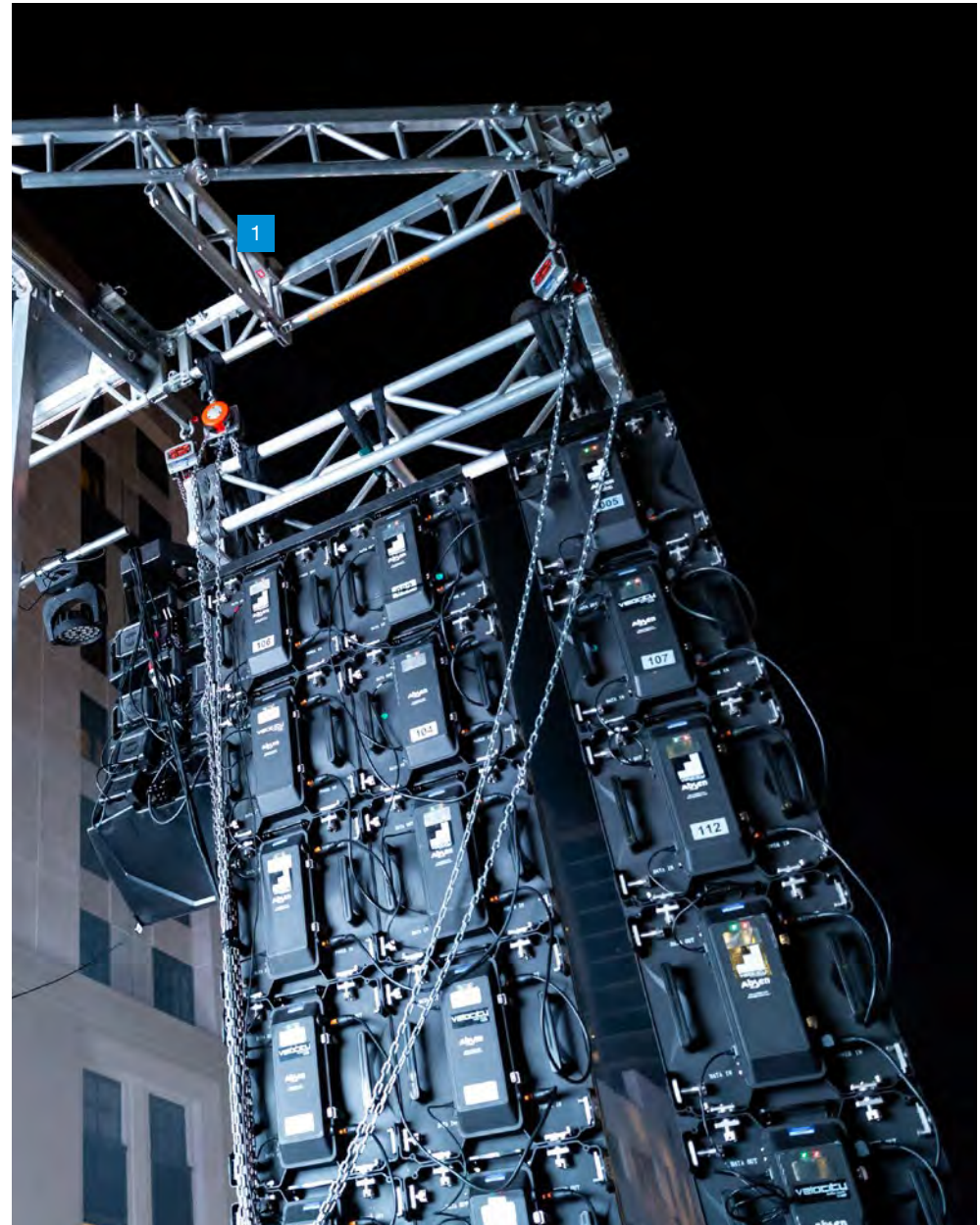


# SCREENS

---

**1,500 LB (680 KG) CAPACITY PER SIDE.  
INCREASED RIGGING OPTIONS WITH THE  
6' (1.8M) SIDE RIGGING TRUSSES FOR  
LED SCREEN OR SPEAKERS.**

**1 LINE ARRAY CAPABILITY FREE UP  
FLYBAY FOR VIDEO WALL.**







# SAFETY AND RELIABILITY IN ALL CONDITIONS

---

## HIGHEST WIND RESISTANCE IN THE INDUSTRY

Rain and wind protection up to:

- **115 mph (185 km/h)** without windwalls
- **77 mph (123 km/h)** with PVC windwalls

### **Rain or shine, sand or snow**

Stageline mobile stages are built to be operated under the most demanding outdoor conditions.

**The SL100 is engineered and built based on the IBC  
(International building code) & NBC (National building code)**

**Exceeds AINSI standards**







# MAXIMUM WEATHER PROTECTION

---

## A STAGE DESIGNED TO MANAGE WINDY CONDITIONS

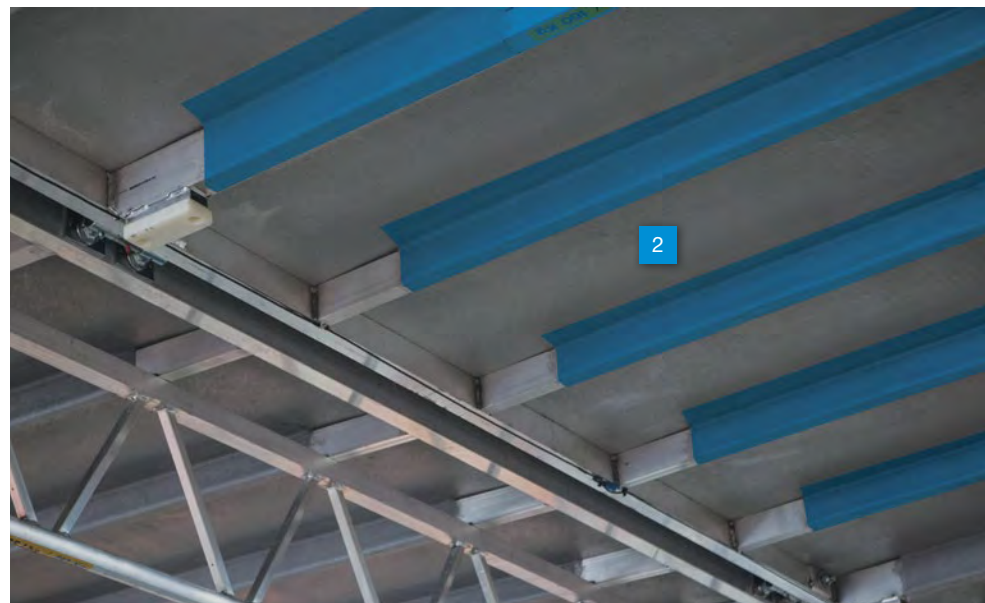
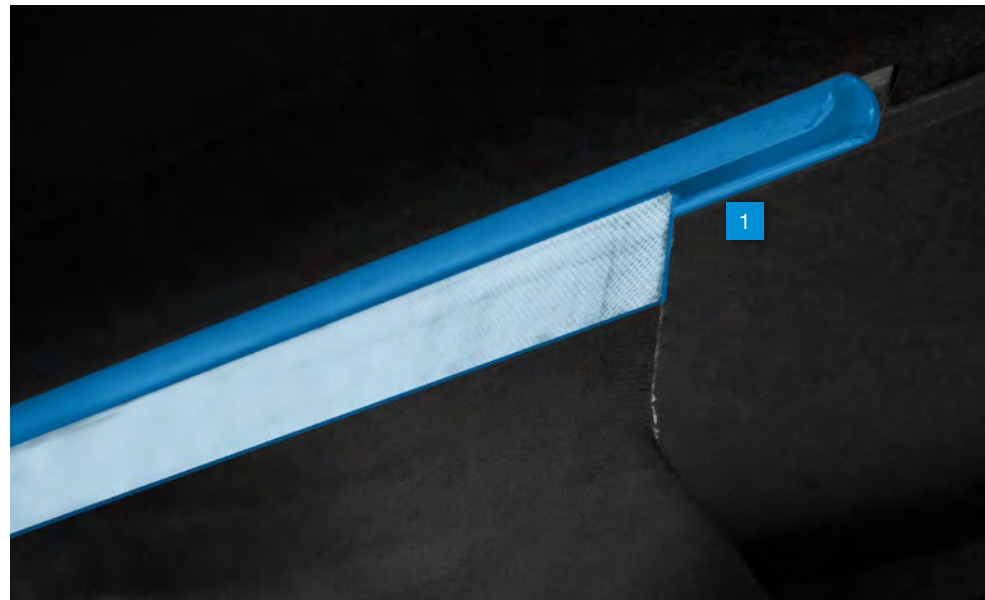
### Sturdy windwalls

- 1 Fire retardant vinyl windwalls with a keeder track system preventing water infiltration to protect gear, talent and crew.

### Protection on and off the road with a roof made of fiber glass.

- 2 In closed position, the roof panels of the stage become the side panels of a hardshell trailer. Wrapped around the frame they are structural and weather protective.\*

\* Blue in picture to highlight keeder track system and Fiber Lock wrap.





**WE JUST TOOK 75 MPH (120KM/H) WINDS, GOLF BALL SIZE HAIL AND  
4 INCHES OF RAIN IN 30 MINUTES AND THE ENTIRE EVENT SPACE  
IS DEVASTATED WITH TENTS BROKEN EVERYWHERE.**

**THE ONLY THING I'M NOT HAVING TO DEAL WITH RIGHT NOW, IS AN  
ABSOLUTELY PRISTINE SL100 STANDING PROUD IN THE MIDDLE OF IT.**

*– Jeff Krebs, Epicenter Productions*





# WHY THE INDUSTRY PREFERS STAGELINE

---

## **Most Widely used**

More than 25,000 events per year in over 50 countries - an average of 68 events per day.

## **Craftsmanship and expertise**

Every stage is built in-house and benefits from serious engineering and craftsmanship with experience gathered from decades of use in outdoor events.

## **Quality control and delivery**

Each mobile stage goes through a complete inspection during manufacturing including load tests and complete installation prior to delivery.

## **Exceptional durability and reliability**

Built to last 25 years and more with proper care and maintenance.

## **Provider of safe staging environments for over 30 years**

Highest wind resistance - up to 115 mph (185 km/h) without windwalls and 77 mph (123 km/h) with windwalls. No incident causing an injury due to a breakdown of equipment.

## **Outstanding value**

Low operation and maintenance cost. High resale value even after 10 years.

## **Certification**

Each stage complies with road regulations. Stageline provides complete engineering certification for both structural design and rigging capacity for all countries. Certified documents available for each state and province of the US and Canada.

## **Environmentally responsible**

All products are manufactured in Stageline's state of the art LEED® certified facility integrating the latest environmental technologies.

## **Award-winning**

Our company and products have achieved high acclaim in the industry and have won several engineering and event industry awards.



# CUSTOMER SERVICE

---

## **Customer Support**

We provide a complete 24/7 after sales support.

## **Parts & Accessories**

The best way to ensure that your Stageline mobile stage retains its original condition is to purchase your parts and accessories directly from Stageline.

## **Inspection & Maintenance**

Like any sophisticated piece of equipment, a Stageline mobile stage requires basic maintenance throughout the year. This maintenance must be performed according to specific guidelines.

With this in mind, Stageline's engineers and experienced technicians have developed a unique inspection program. This program will give you a complete analysis of the condition of your equipment including a list of immediate repairs & recommendations.



## **Training**

Driven by the need to ensure technical efficiency, Stageline developed a training and certification program which meets and even exceeds its clients' and users' requirements. Operation of a Stageline mobile stage by qualified personnel is directly linked with the enforceability of the warranty and is required to benefit from the technical support offered on all Stageline products.

With its training program, Stageline helps its users and clients increase profitability on their investment through an efficient utilization of the products.

The main goal is to develop the aptitudes and technical knowledge of the technicians in order to preserve the products' integrity and guarantee durability and maximum safety levels.



# UNMATCHED ADDED VALUE

---

## **A STAGE THAT PAYS FOR ITSELF FOR GOOD REASONS:**

Built to last over 20 years, this stage will help you maximize your benefits for years while endorsing a strong commitment to sustainability.

## **THIS STAGE COMES WITH THE HIGHEST RESIDUAL VALUE OF ANY MOBILE STAGE**

It retains 50-75% of its value after 10 years

## **OFFERS A STRONG LEVERAGE ON YOUR OTHER SERVICES AND A QUICK RETURN ON INVESTMENT**

## **STAGE CARE WARRANTY (TRANSFERABLE)**

**We are so confident in our staging technology that we offer the Stage Care Warranty that conveys a lasting assurance equal to none**

- Full 1 year parts and labor
- 3 years on the chassis and structure
- 5 years on the fiber glass

# MEET THOSE WHO OWN

---

## DURABILITY AND VALUE

“Each year I flirt with the idea of purchasing more Stageline equipment. All I can tell you is that used, properly maintained Stageline equipment sells quickly. I watch the secondary market out of habit and its very rare to find anything, plus it usually maintains almost all of its dollar value as new.”

**Dolph Federico /  
Pelican Events, New Orleans, LA**

## PRODUCTION AND ENTERTAINMENT

“SL100 is defacto a standard in the industry. Everyone of professional note use Stageline. I wanted that bulletproof proven technology, workmanship, and engineering. Stageline’s SL100 changed my life!”

**Laurence Sheldon /  
Big Ear Audio, CA**

## MUNICIPALITIES / PARKS AND RECREATION

“The “Rec & Roll Stage” is a hit in our community! The size and versatility of the SL100 combined with the ease of set-up make it perfect for our needs. We’ve used it for performances, graduations, and speeches. Community requests keep coming in and we’re the envy of our neighboring communities.”

**Ron Rodriguez /  
Recreation Services Manager /  
Recreation and Parks Department,  
City of Santa Maria, CA**



# TECHNICAL SPECIFICATIONS

## NOTABLE BENEFITS

### Site Preparation

None

### Mode of Transportation

1 Pick-up truck or hauling vehicle

### Wind Resistance

115 mph (185 km/h) without windwalls or  
77 mph (123 km/h) with windwalls

### Promotional Visibility

Rolling billboard or banners and posters

### Backdrop\*

Weatherproof - fire retardant vinyl or scrim

### Vertical and Horizontal Banner Supports\*

Installed at ground level

TRAILER		
Length	31' 9"	9.69 m
Width	8' 0"	2.43 m
Height	11' 2"	3.40 m
Dry Weight	9,460 lb	4,290 kg
Maximum Weight	15,000 lb	6,804 kg
STAGE FLOOR		
Length and Depth	24' x 20' 1"	7.32 x 6.1 m
Height	3' 6" to 4' 3"	1.07 x 1.30 m
Design Live Load	150 lb/ft²	732 kg/m²
Type of Surface	Plywood on aluminium	
ROOF		
Length and Depth	25' 1" x 23' 9"	7.64 x 7.23 m
Clearance (Inclined roof)	14' 6" to 13' 2"	4.43 to 4 m
Height (from ground)	19' 0" to 19' 9"	5.79 to 6.02 m
Type of Surface	Fiberglass moulded around aluminum structure	
Roof Lifting Capacity	3,800 lb	1,725 kg
<b>Roof Load Bearing Capacity</b>	<b>2,400 lb</b>	<b>5,190 kg</b>
2 Trusses - Downstage & Upstage (T2)	1,200 lb (each)	544 kg (each)
2 Trusses - Central Roof (T1)	1,500 lb (each)	680 kg (each)
2 Front Overhang Extensions*	350 lb at 33" each	159 kg at 0.84 m each
2 Side Overhang Rigging Beams	1500 lb (each) 750 lb at 75" each	680 kg (each) 340 kg at 1.89 m each

† Please refer to rigging plan.

\* Optional

Values indicated are nominal. Due to STAGELINE'S product improvement policy, technical specifications may change without notice.



Standard 24' x 20' (7m x 6m)



# SOME FLOOR CONFIGURATIONS

---

FROM A BANDSHELL TO A FULL PERFORMANCE  
STAGE CONFIGURATIONS



Bandshell 24'x13'  
(7m x 4m)



Standard 24'x20' (7m x 6m)  
with 8'x8' (2.5m x 2.5m)  
sound wings



Back Extended 4'x24' (1m x 7m)  
with 8'x8' (2.5m x 2.5m)  
sound wings



Standard 24'x20' (7m x 6m) with  
8'x8' (2.5m x 2.5m) sound wings and  
8'x40' (2.5m x 12m) at the front



Standard 24'x20' (7m x 6m)  
with 12'x20' (3.5 x 6m) sound wings

827 L'Ange-Gardien Blvd., L'Assomption  
Quebec, Canada J5W 1T3  
**1 450.589.1063 / North America 1 800.267.8243**  
**[stageline.com](http://stageline.com)**

**MOBILE STAGES | SALES & RENTALS**

