

HyRig

HyRig LED SCREEN SUPPORT

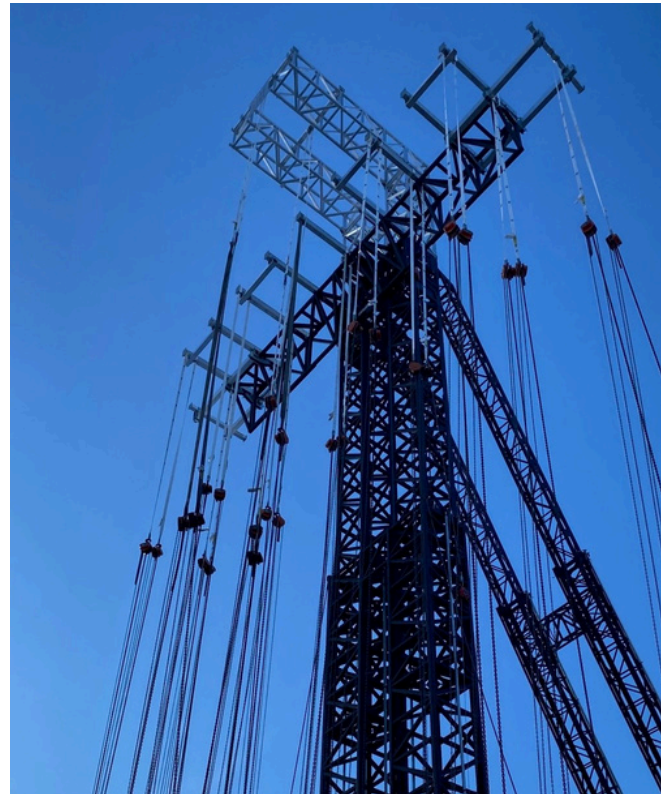
© Festival d'été de Québec / Étienne Dionne

STAGE
LINE

HyRig

A STAGING EQUIPMENT PURPOSELY BUILT
FOR LARGE LED SCREEN INSTALLATION.





SCREENS & WIND, NO PROBLEM


Streamline your events with unmatched wind resistance, simplified high wind protocols and fast setups.

WIND RESISTANCE
Up to 77mph (125km/h)

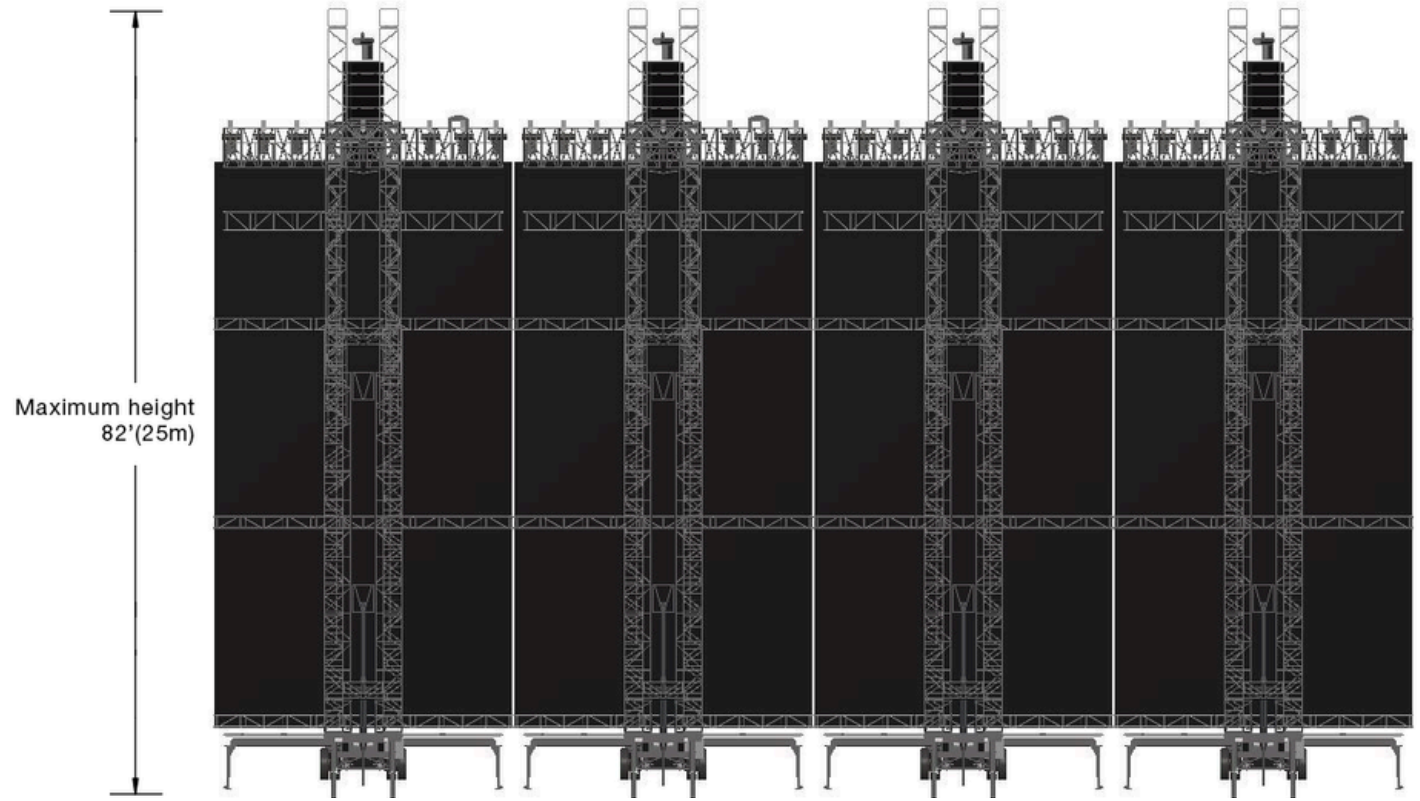
RIGGING
30,000 lbs (13,600 kg) per unit, including :

- 6,600 lbs (2,993 kg) for PA
- 3,300 lbs (1,496 kg) per sidefills

SCREENS
Up to 30' x 57' (9m x 17m)

SET UP	QTY	HRS
Set up for one HyRig	4x 	4

Elevate your stage design with flexible integration options, incorporating screens, sound, and other set elements.



Rear view of a 120' x 57' (36m x 17m) LED wall using four towers.

A POWERFUL STANDALONE STAGING SOLUTION

The HyRig is a self-supported structure, hydraulically deployed. Compatible with SAM Series stages or combined with other HyRig units, this LED screen support equipment offers multiple configurations, including a wide 120' x 57' (36m x 17m) LED wall.





© Festival d'été de Québec / André-Olivier Lyra